
Product Name: CD300a Rabbit Polyclonal Antibody**Catalog #: APRab08339**

For research use only.

Summary

Description	Rabbit polyclonal Antibody
Host	Rabbit
Application	IHC,ICC/IF,ELISA
Reactivity	Human,Rat,Mouse
Conjugation	Unconjugated
Modification	Unmodified
Isotype	IgG
Clonality	Polyclonal
Form	Liquid
Concentration	1mg/ml
Storage	Aliquot and store at -20°C (valid for 12 months). Avoid freeze/thaw cycles.
Shipping	Ice bags
Buffer	Liquid in PBS containing 50% glycerol, 0.5% protective protein and 0.02% New type preservative N.
Purification	Affinity purification

Application

Dilution Ratio IHC 1:50-1:200,ICC/IF 1:50-1:200,ELISA 1:10000-1:20000

Molecular Weight

Antigen Information

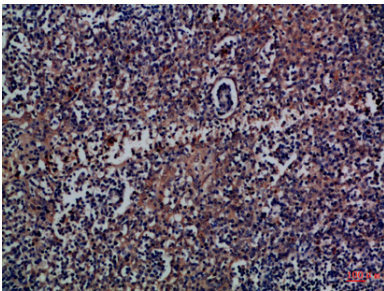
Gene Name	CD300A CMRF35H IGSF12 HSPC083 CMRF35-like molecule 8 (CLM-8;CD300 antigen-like family member A;CMRF-35-
Alternative Names	H9;CMRF35-H9;CMRF35-H;IRC1/IRC2;Immunoglobulin superfamily member 12;IgSF12;Inhibitory receptor protein 60;IRp60;NK inhibitory receptor;CD antigen CD300a)
Gene ID	11314.0
SwissProt ID	Q9UGN4
Immunogen	Synthetic peptide from human protein at AA range: 141-190

Background

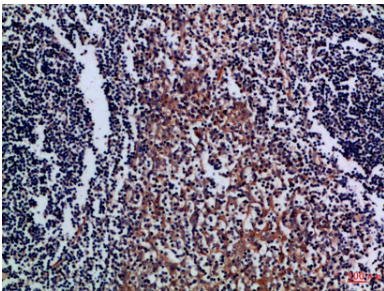
CD300a molecule(CD300A) Homo sapiens This gene encodes a member of the CD300 glycoprotein family of cell surface proteins found on leukocytes involved in immune response signaling pathways. This gene is located on chromosome 17 in a cluster with all but one of the other family members. Multiple transcript variants encoding different isoforms have been found for this gene. [provided by RefSeq, Feb 2012],function:Inhibitory receptor which may contribute to the down-regulation of cytolytic activity in natural killer (NK) cells, and to the down-regulation of mast cell degranulation.,PTM:Phosphorylated on tyrosine.,similarity:Belongs to the CD300 family.,similarity:Contains 1 Ig-like V-type (immunoglobulin-like) domain.,subunit:Upon tyrosine-phosphorylation, interacts with PTN6/SHP-1 and PTPN11/SHP-2 and INPP5D.,tissue specificity:Expressed not only by natural killer (NK) cells but also by T-cell subsets, B-cells, dendritic cells, mast cells, granulocytes and monocytes.,

Research Area

Image Data



Immunohistochemical analysis of paraffin-embedded Human-tonsil, antibody was diluted at 1:100



Immunohistochemical analysis of paraffin-embedded Human-tonsil, antibody was diluted at 1:100