

**Product Name: CD28 Rabbit Polyclonal Antibody****Catalog #: APRab08324**

For research use only.

**Summary**

<b>Description</b>	Rabbit polyclonal Antibody
<b>Host</b>	Rabbit
<b>Application</b>	WB,ELISA
<b>Reactivity</b>	Human,Rat,Mouse
<b>Conjugation</b>	Unconjugated
<b>Modification</b>	Unmodified
<b>Isotype</b>	IgG
<b>Clonality</b>	Polyclonal
<b>Form</b>	Liquid
<b>Concentration</b>	1mg/ml
<b>Storage</b>	Aliquot and store at -20°C (valid for 12 months). Avoid freeze/thaw cycles.
<b>Shipping</b>	Ice bags
<b>Buffer</b>	Liquid in PBS containing 50% glycerol, 0.5% protective protein and 0.02% New type preservative N.
<b>Purification</b>	Affinity purification

**Application**

<b>Dilution Ratio</b>	WB 1:500-1:2000,ELISA 1:10000-1:20000
<b>Molecular Weight</b>	25kDa

**Antigen Information**

<b>Gene Name</b>	CD28
<b>Alternative Names</b>	CD28; T-cell-specific surface glycoprotein CD28; TP44; CD28
<b>Gene ID</b>	940.0
<b>SwissProt ID</b>	P10747
<b>Immunogen</b>	Synthesized peptide derived from T-cell-specific surface glycoprotein CD28 at AA range: 11-60

**Background**

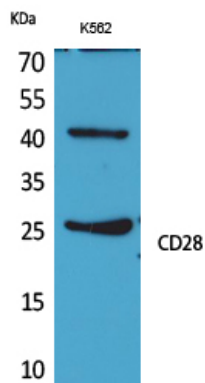
The protein encoded by this gene is essential for T-cell proliferation and survival, cytokine production, and T-helper type-2

development. Several alternatively spliced transcript variants encoding different isoforms have been found for this gene. [provided by RefSeq, Jul 2011],function:Involved in T-cell activation, the induction of cell proliferation and cytokine production and promotion of T-cell survival.,online information:CD28 entry,similarity:Contains 1 Ig-like V-type (immunoglobulin-like) domain.,subunit:Homodimer; disulfide-linked. Interacts with DUSP14. Binds to CD80/B7-1 and CD86/B7-2/B70.,tissue specificity:Expressed in T-cells and plasma cells, but not in less mature B-cells.,

## Research Area

Cell adhesion molecules (CAMs);T\_Cell\_Receptor;Intestinal immune network for IgA production;Type I diabetes mellitus;Autoimmune thyroid disease;Systemic lupus erythematosus;Allograft rejection;Graft-versus-host disease;Viral myocarditis;

## Image Data



Western Blot analysis of K562 cells using CD28 Polyclonal Antibody.. Secondary antibody was diluted at 1:20000