

Product Name: CD248 Rabbit Polyclonal Antibody**Catalog #: APRab08307**

For research use only.

Summary

Description	Rabbit polyclonal Antibody
Host	Rabbit
Application	WB,ELISA
Reactivity	Human,Rat,Mouse
Conjugation	Unconjugated
Modification	Unmodified
Isotype	IgG
Clonality	Polyclonal
Form	Liquid
Concentration	1mg/ml
Storage	Aliquot and store at -20°C (valid for 12 months). Avoid freeze/thaw cycles.
Shipping	Ice bags
Buffer	Liquid in PBS containing 50% glycerol, 0.5% protective protein and 0.02% New type preservative N.
Purification	Affinity purification

Application

Dilution Ratio	WB 1:500-1:2000,ELISA 1:10000-1:20000
Molecular Weight	80kDa

Antigen Information

Gene Name	CD248
Alternative Names	CD248; CD164L1; TEM1; Endosialin; Tumor endothelial marker 1; CD248
Gene ID	57124.0
SwissProt ID	Q9HCU0
Immunogen	The antiserum was produced against synthesized peptide derived from the Internal region of human CD248. AA range:341-390

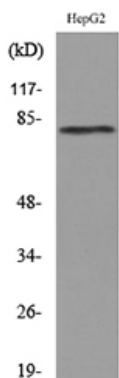
Background

function:May play a role in tumor angiogenesis.,online information:Endosialin,PTM:May be N-glycosylated.,PTM:O-

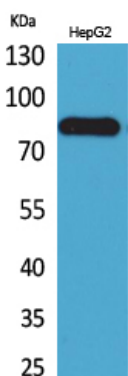
glycosylated with sialylated oligosaccharides.,similarity:Contains 1 C-type lectin domain.,similarity:Contains 1 EGF-like domain.,similarity:Contains 1 Sushi (CCP/SCR) domain.,tissue specificity:Expressed in tumor endothelial cells but absent or barely detectable in normal endothelial cells. Expressed in metastatic lesions of the liver and during angiogenesis of corpus luteum formation and wound healing. Expressed in vascular endothelial cells of malignant tumors but not in normal blood vessels. Expressed in stromal fibroblasts.,function:May play a role in tumor angiogenesis.,online information:Endosialin,PTM:May be N-glycosylated.,PTM:O-glycosylated with sialylated oligosaccharides.,similarity:Contains 1 C-type lectin domain.,similarity:Contains 1 EGF-like domain.,similarity:Contains 1 Sushi (CCP/SCR) domain.,tissue specificity:Expressed in tumor endothelial cells but absent or barely detectable in normal endothelial cells. Expressed in metastatic lesions of the liver and during angiogenesis of corpus luteum formation and wound healing. Expressed in vascular endothelial cells of malignant tumors but not in normal blood vessels. Expressed in stromal fibroblasts.,

Research Area

Image Data



Western blot analysis of lysate from HepG2 cells, using CD248 Antibody.



Western Blot analysis of HepG2 cells using CD248 Polyclonal Antibody.. Secondary antibody was diluted at 1:20000