

**Product Name: CD225 Rabbit Polyclonal Antibody****Catalog #: APRab08288**

For research use only.

**Summary**

<b>Description</b>	Rabbit polyclonal Antibody
<b>Host</b>	Rabbit
<b>Application</b>	WB,IHC,ICC/IF,ELISA
<b>Reactivity</b>	Human,Rat,Mouse
<b>Conjugation</b>	Unconjugated
<b>Modification</b>	Unmodified
<b>Isotype</b>	IgG
<b>Clonality</b>	Polyclonal
<b>Form</b>	Liquid
<b>Concentration</b>	1mg/ml
<b>Storage</b>	Aliquot and store at -20°C (valid for 12 months). Avoid freeze/thaw cycles.
<b>Shipping</b>	Ice bags
<b>Buffer</b>	Liquid in PBS containing 50% glycerol, 0.5% protective protein and 0.02% New type preservative N.
<b>Purification</b>	Affinity purification

**Application**

<b>Dilution Ratio</b>	WB 1:500-1:2000,IHC 1:100-1:300,ICC/IF 1:50-1:200,ELISA 1:10000-1:20000
<b>Molecular Weight</b>	15kDa

**Antigen Information**

<b>Gene Name</b>	IFITM1
<b>Alternative Names</b>	IFITM1; CD225; IFI17; Interferon-induced transmembrane protein 1; Dispanin subfamily A member 2a; DSPA2a; Interferon-induced protein 17; Interferon-inducible protein 9-27; Leu-13 antigen; CD225
<b>Gene ID</b>	8519.0
<b>SwissProt ID</b>	P13164
<b>Immunogen</b>	The antiserum was produced against synthesized peptide derived from the N-terminal region of human IFITM1. AA range:1-50

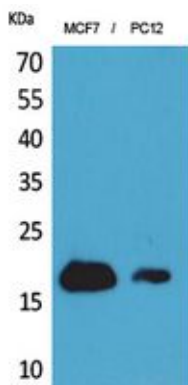
## Background

function: Implicated in the control of cell growth. Component of a multimeric complex involved in the transduction of antiproliferative and homotypic adhesion signals., induction: By alpha and gamma interferons., similarity: Belongs to the CD225 family., function: Implicated in the control of cell growth. Component of a multimeric complex involved in the transduction of antiproliferative and homotypic adhesion signals., induction: By alpha and gamma interferons., similarity: Belongs to the CD225 family.,

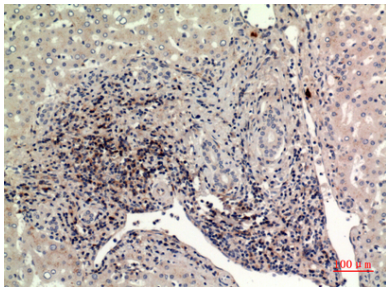
## Research Area

B\_Cell\_Antigen;

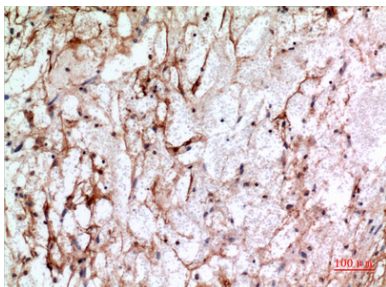
## Image Data



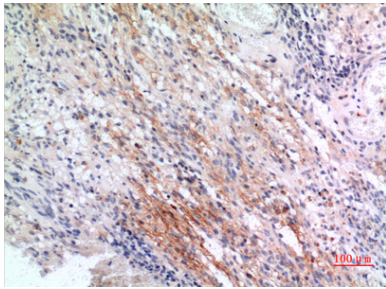
Western Blot analysis of MCF7, PC12 cells using CD225 Polyclonal Antibody.. Secondary antibody was diluted at 1:20000



Immunohistochemical analysis of paraffin-embedded human-liver, antibody was diluted at 1:100



Immunohistochemical analysis of paraffin-embedded human-brain, antibody was diluted at 1:100



Immunohistochemical analysis of paraffin-embedded human-brain, antibody was diluted at 1:100