

---

**Product Name: CD180 Rabbit Polyclonal Antibody****Catalog #: APRab08253**

For research use only.

**Summary**

<b>Description</b>	Rabbit polyclonal Antibody
<b>Host</b>	Rabbit
<b>Application</b>	WB,ELISA
<b>Reactivity</b>	Human,Mouse,Rat
<b>Conjugation</b>	Unconjugated
<b>Modification</b>	Unmodified
<b>Isotype</b>	IgG
<b>Clonality</b>	Polyclonal
<b>Form</b>	Liquid
<b>Concentration</b>	1mg/ml
<b>Storage</b>	Aliquot and store at -20°C (valid for 12 months). Avoid freeze/thaw cycles.
<b>Shipping</b>	Ice bags
<b>Buffer</b>	Liquid in PBS containing 50% glycerol, 0.5% protective protein and 0.02% New type preservative N.
<b>Purification</b>	Affinity purification

**Application**

<b>Dilution Ratio</b>	WB 1:500-1:2000,ELISA 1:5000-1:20000
<b>Molecular Weight</b>	75kDa

**Antigen Information**

<b>Gene Name</b>	CD180
<b>Alternative Names</b>	CD180; LY64; RP105; CD180 antigen; Lymphocyte antigen 64; Radioprotective 105 kDa protein; CD180
<b>Gene ID</b>	4064.0
<b>SwissProt ID</b>	Q99467
<b>Immunogen</b>	Synthesized peptide derived from CD180 antigen at AA range: 221-270

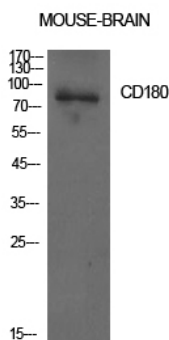
**Background**

CD180 is a cell surface molecule consisting of extracellular leucine-rich repeats (LRR) and a short cytoplasmic tail. The

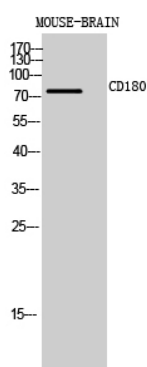
extracellular LRR is associated with a molecule called MD-1 and form the cell surface receptor complex, RP105/MD-1. It belongs to the family of pathogen receptors, Toll-like receptors (TLR). RP105/MD1, by working in concert with TLR4, controls B cell recognition and signaling of lipopolysaccharide (LPS), a membrane constituent of Gram-negative bacteria. [provided by RefSeq, Jul 2008],disease:Decreased expression of LY64 has been shown in systemic lupus erythematosus (SLE). The loss of LY64 is associated with B-cell activation and increased disease activity in SLE patients.,function:May cooperate with MD-1 and TLR4 to mediate the innate immune response to bacterial lipopolysaccharide (LPS) in B-cells. Leads to NF-kappa-B activation. Also involved in the life/death decision of B-cells.,similarity:Belongs to the Toll-like receptor family.,similarity:Contains 17 LRR (leucine-rich) repeats.,subunit:Binds to MD-1.,tissue specificity:Expressed mainly on mature peripheral B cells. Detected in spleen, lymph node and appendix. Not detected in pre-B and -T cells.,

## Research Area

## Image Data



Western Blot analysis of mouse brain cells using CD180 Polyclonal Antibody. Antibody was diluted at 1:1000. Secondary antibody was diluted at 1:20000



Western Blot analysis of MOUSE-BRAIN cells using CD180 Polyclonal Antibody diluted at 1: 1000. Secondary antibody was diluted at 1:20000