
Product Name: CD172b Rabbit Polyclonal Antibody**Catalog #: APRab08249**

For research use only.

Summary

Description	Rabbit polyclonal Antibody
Host	Rabbit
Application	WB,ELISA
Reactivity	Human,Rat,Mouse
Conjugation	Unconjugated
Modification	Unmodified
Isotype	IgG
Clonality	Polyclonal
Form	Liquid
Concentration	1mg/ml
Storage	Aliquot and store at -20°C (valid for 12 months). Avoid freeze/thaw cycles.
Shipping	Ice bags
Buffer	Liquid in PBS containing 50% glycerol, 0.5% protective protein and 0.02% New type preservative N.
Purification	Affinity purification

Application

Dilution Ratio	WB 1:500-1:2000,ELISA 1:5000-1:10000
Molecular Weight	48kDa

Antigen Information

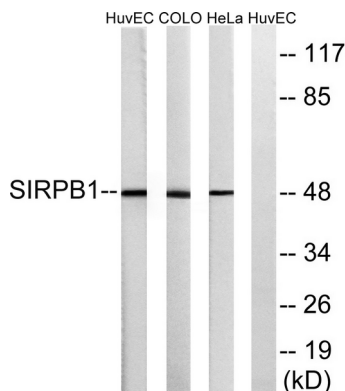
Gene Name	SIRPB1
Alternative Names	SIRPB1; Signal-regulatory protein beta-1; SIRP-beta-1; CD172 antigen-like family member B; CD antigen CD172b
Gene ID	10326.0
SwissProt ID	O00241
Immunogen	The antiserum was produced against synthesized peptide derived from human SIRPB1. AA range:231-280

Background

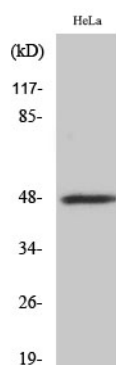
The protein encoded by this gene is a member of the signal-regulatory-protein (SIRP) family, and also belongs to the immunoglobulin superfamily. SIRP family members are receptor-type transmembrane glycoproteins known to be involved in the negative regulation of receptor tyrosine kinase-coupled signaling processes. This protein was found to interact with TYROBP/DAP12, a protein bearing immunoreceptor tyrosine-based activation motifs. This protein was also reported to participate in the recruitment of tyrosine kinase SYK. Multiple transcript variants encoding different isoforms have been found for this gene. [provided by RefSeq, Feb 2009],function:Immunoglobulin-like cell surface receptor involved in the negative regulation of receptor tyrosine kinase-coupled signaling processes.,function:Immunoglobulin-like cell surface receptor involved in the negative regulation of receptor tyrosine kinase-coupled signaling processes. Participates also in the recruitment of tyrosine kinase SYK.,PTM:N-glycosylated.,similarity:Contains 1 Ig-like V-type (immunoglobulin-like) domain.,similarity:Contains 2 Ig-like C1-type (immunoglobulin-like) domains.,subunit:Interacts with TYROBP. This interaction results in the recruitment of SYK.,tissue specificity:Detected in monocytes and dendritic cells,

Research Area

Image Data



Western blot analysis of lysates from HeLa, COLO, and HUVEC cells, using SIRPB1 Antibody. The lane on the right is blocked with the synthesized peptide.



Western Blot analysis of various cells using CD172b Polyclonal Antibody