

Product Name: CD169 Rabbit Polyclonal Antibody**Catalog #: APRab08248**

For research use only.

Summary

Description	Rabbit polyclonal Antibody
Host	Rabbit
Application	WB,ELISA
Reactivity	Human,Rat,Mouse
Conjugation	Unconjugated
Modification	Unmodified
Isotype	IgG
Clonality	Polyclonal
Form	Liquid
Concentration	1mg/ml
Storage	Aliquot and store at -20°C (valid for 12 months). Avoid freeze/thaw cycles.
Shipping	Ice bags
Buffer	Liquid in PBS containing 50% glycerol, 0.5% protective protein and 0.02% New type preservative N.
Purification	Affinity purification

Application

Dilution Ratio	WB 1:500-1:2000,ELISA 1:10000-1:20000
Molecular Weight	190kDa

Antigen Information

Gene Name	SIGLEC1
Alternative Names	SIGLEC1; SN; Sialoadhesin; Sialic acid-binding Ig-like lectin 1; Siglec-1; CD169
Gene ID	6614.0
SwissProt ID	Q9BZZ2
Immunogen	The antiserum was produced against synthesized peptide derived from the Internal region of human SIGLEC1. AA range:1321-1370

Background

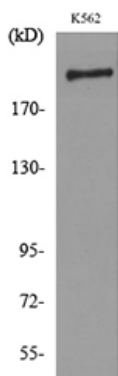
This gene encodes a member of the immunoglobulin superfamily. The encoded protein is a lectin-like adhesion molecule that

binds glycoconjugate ligands on cell surfaces in a sialic acid-dependent manner. It is a type I transmembrane protein expressed only by a subpopulation of macrophages and is involved in mediating cell-cell interactions. Alternative splicing produces a transcript variant encoding an isoform that is soluble rather than membrane-bound; however, the full-length nature of this variant has not been determined. [provided by RefSeq, Jul 2008],alternative products:Additional isoforms seem to exist,function:Macrophage-restricted adhesion molecule that mediates sialic-acid dependent binding to lymphocytes, including granulocytes, monocytes, natural killer cells, B-cells and CD8 T-cells. Preferentially binds to alpha-2,3-linked sialic acid (By similarity). Binds to SPN/CD43 on T-cells (By similarity). May play a role in hemopoiesis.,online information:Siglec-1,similarity:Belongs to the immunoglobulin superfamily. SIGLEC (sialic acid binding Ig-like lectin) family.,similarity:Contains 1 Ig-like V-type (immunoglobulin-like) domain.,similarity:Contains 16 Ig-like C2-type (immunoglobulin-like) domains.,tissue specificity:Expressed by macrophages in various tissues. High levels are found in spleen, lymph node, perivascular macrophages in brain and lower levels in bone marrow, liver Kupffer cells and lamina propria of colon and lung. Also expressed by inflammatory macrophages in rheumatoid arthritis.,

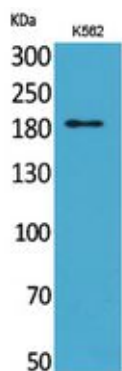
Research Area

Cell adhesion molecules (CAMs);

Image Data



Western blot analysis of lysate from K562 cells, using SIGLEC1 Antibody.



Western Blot analysis of K562 cells using CD169 Polyclonal Antibody.. Secondary antibody was diluted at 1:20000