
Product Name: CD163b Rabbit Polyclonal Antibody**Catalog #: APRab08241**

For research use only.

Summary

Description	Rabbit polyclonal Antibody
Host	Rabbit
Application	WB,IHC,ICC/IF,ELISA
Reactivity	Human,Rat,Mouse
Conjugation	Unconjugated
Modification	Unmodified
Isotype	IgG
Clonality	Polyclonal
Form	Liquid
Concentration	1mg/ml
Storage	Aliquot and store at -20°C (valid for 12 months). Avoid freeze/thaw cycles.
Shipping	Ice bags
Buffer	Liquid in PBS containing 50% glycerol, 0.5% protective protein and 0.02% New type preservative N.
Purification	Affinity purification

Application

Dilution Ratio	WB 1:500-1:2000,IHC 1:100-1:300,ICC/IF 1:50-1:200,ELISA 1:10000-1:20000
Molecular Weight	160kDa

Antigen Information

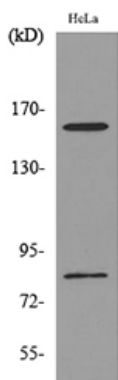
Gene Name	CD163L1
Alternative Names	CD163L1; CD163B; M160; Scavenger receptor cysteine-rich type 1 protein M160; CD163 antigen-like 1; CD163b
Gene ID	283316.0
SwissProt ID	Q9NR16
Immunogen	The antiserum was produced against synthesized peptide derived from the Internal region of human CD163L1. AA range:391-440

Background

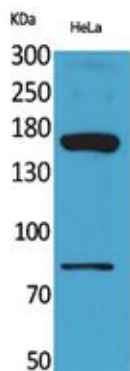
This gene encodes a member of the scavenger receptor cysteine-rich (SRCR) superfamily. Members of this family are secreted or membrane-anchored proteins mainly found in cells associated with the immune system. The SRCR family is defined by a 100-110 amino acid SRCR domain, which may mediate protein-protein interaction and ligand binding. The encoded protein contains twelve SRCR domains, a transmembrane region and a cytoplasmic domain. Alternative splicing results in multiple transcript variants encoding different isoforms. [provided by RefSeq, Jul 2014],similarity:Contains 12 SRCR domains.,tissue specificity:Isoform 1 is highly expressed in the spleen, lymph nodes, thymus, and fetal liver and weakly expressed in bone marrow and no expression was found in peripheral blood leukocytes. Isoform 1 expression is restricted to the monocyte and macrophage cell lines. Isoform 2 is only expressed in spleen.,

Research Area

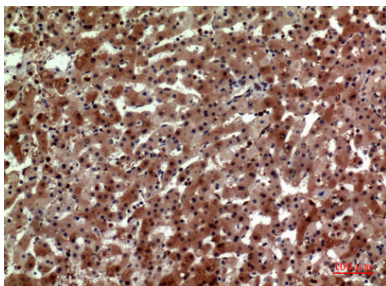
Image Data



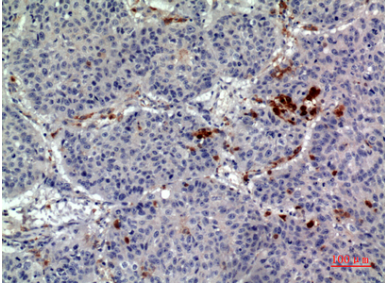
Western blot analysis of lysate from HeLa cells, using CD163L1 Antibody.



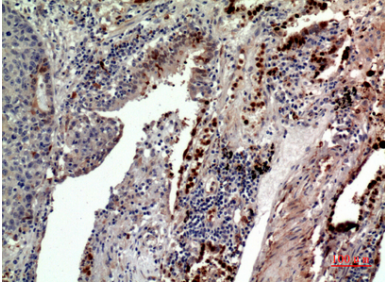
Western Blot analysis of HeLa cells using CD163b Polyclonal Antibody.. Secondary antibody was diluted at 1:20000



Immunohistochemical analysis of paraffin-embedded human-liver, antibody was diluted at 1:100



Immunohistochemical analysis of paraffin-embedded human-lung, antibody was diluted at 1:100



Immunohistochemical analysis of paraffin-embedded human-lung, antibody was diluted at 1:100