

---

**Product Name: CD108 Rabbit Polyclonal Antibody****Catalog #: APRab08188**

For research use only.

**Summary**

<b>Description</b>	Rabbit polyclonal Antibody
<b>Host</b>	Rabbit
<b>Application</b>	WB,ELISA
<b>Reactivity</b>	Human,Mouse,Rat
<b>Conjugation</b>	Unconjugated
<b>Modification</b>	Unmodified
<b>Isotype</b>	IgG
<b>Clonality</b>	Polyclonal
<b>Form</b>	Liquid
<b>Concentration</b>	1mg/ml
<b>Storage</b>	Aliquot and store at -20°C (valid for 12 months). Avoid freeze/thaw cycles.
<b>Shipping</b>	Ice bags
<b>Buffer</b>	Liquid in PBS containing 50% glycerol, 0.5% protective protein and 0.02% New type preservative N.
<b>Purification</b>	Affinity purification

**Application**

<b>Dilution Ratio</b>	WB 1:500-1:2000,ELISA 1:5000-1:10000
<b>Molecular Weight</b>	75kDa

**Antigen Information**

<b>Gene Name</b>	SEMA7A SEMA7A; CD108; SEMAL; Semaphorin-7A; CDw108; JMH blood group antigen; John-Milton-
<b>Alternative Names</b>	Hargen human blood group Ag; Semaphorin-K1; Sema K1; Semaphorin-L; Sema L; CD antigen CD108
<b>Gene ID</b>	8482.0
<b>SwissProt ID</b>	O75326
<b>Immunogen</b>	Synthesized peptide derived from CD108 . at AA range: 150-230

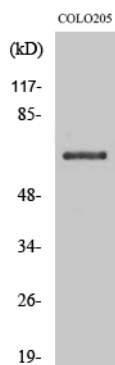
**Background**

This gene encodes a member of the semaphorin family of proteins. The encoded preproprotein is proteolytically processed to generate the mature glycosylphosphatidylinositol (GPI)-anchored membrane glycoprotein. The encoded protein is found on activated lymphocytes and erythrocytes and may be involved in immunomodulatory and neuronal processes. The encoded protein carries the John Milton Hagen (JMH) blood group antigens. Mutations in this gene may be associated with reduced bone mineral density (BMD). Alternative splicing results in multiple transcript variants, at least one of which encodes an isoform that is proteolytically processed. [provided by RefSeq, Feb 2016],function:May play an important role in the nervous system and in modulating immune function.,online information:Blood group antigen gene mutation database,similarity:Belongs to the semaphorin family.,similarity:Contains 1 Ig-like C2-type (immunoglobulin-like) domain.,similarity:Contains 1 PSI domain.,similarity:Contains 1 Sema domain.,tissue specificity:Expressed in placenta, testis, ovary, spleen, brain, spinal chord, lung, heart, adrenal gland, lymph nodes, thymus, intestine and kidney.,

## Research Area

Axon guidance;

## Image Data



Western Blot analysis of various cells using CD108 Polyclonal Antibody