
Product Name: CD107b Rabbit Polyclonal Antibody**Catalog #: APRab08187**

For research use only.

Summary

Description	Rabbit polyclonal Antibody
Host	Rabbit
Application	WB,IHC,ICC/IF,ELISA
Reactivity	Human,Rat,Mouse
Conjugation	Unconjugated
Modification	Unmodified
Isotype	IgG
Clonality	Polyclonal
Form	Liquid
Concentration	1mg/ml
Storage	Aliquot and store at -20°C (valid for 12 months). Avoid freeze/thaw cycles.
Shipping	Ice bags
Buffer	Liquid in PBS containing 50% glycerol, 0.5% protective protein and 0.02% New type preservative N.
Purification	Affinity purification

Application

Dilution Ratio	WB 1:500-1:2000,IHC 1:100-1:300,ICC/IF 1:50-1:200,ELISA 1:5000-1:20000
Molecular Weight	100kDa

Antigen Information

Gene Name	LAMP2
Alternative Names	LAMP2; Lysosome-associated membrane glycoprotein 2; LAMP-2; Lysosome-associated membrane protein 2; CD107 antigen-like family member B; CD107b
Gene ID	3920.0
SwissProt ID	P13473
Immunogen	The antiserum was produced against synthesized peptide derived from the Internal region of human LAMP2. AA range:121-170

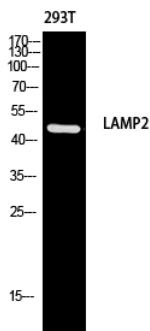
Background

The protein encoded by this gene is a member of a family of membrane glycoproteins. This glycoprotein provides selectins with carbohydrate ligands. It may play a role in tumor cell metastasis. It may also function in the protection, maintenance, and adhesion of the lysosome. Alternative splicing of this gene results in multiple transcript variants encoding distinct proteins. [provided by RefSeq, Jul 2008],disease:Defects in LAMP2 are the cause of Danon disease (DAND) [MIM:300257]; also known as glycogen storage disease type 2B (GSD2B). DAND is a lysosomal glycogen storage disease characterized by the clinical triad of cardiomyopathy, vacuolar myopathy and mental retardation. It is often associated with an accumulation of glycogen in muscle and lysosomes.,function:Implicated in tumor cell metastasis. May function in protection of the lysosomal membrane from autodigestion, maintenance of the acidic environment of the lysosome, adhesion when expressed on the cell surface (plasma membrane), and inter-and intracellular signal transduction.,PTM:O- and N-glycosylated; some of the 16 N-linked glycans are polylectosaminoglycans.,similarity:Belongs to the LAMP family.,subcellular location:This protein shuttles between lysosomes, endosomes, and the plasma membrane.,tissue specificity:Isoform LAMP-2A is highly expressed in placenta, lung and liver, less in kidney and pancreas, low in brain and skeletal muscle. Isoform LAMP-2B is highly expressed in skeletal muscle, less in brain, placenta, lung, kidney and pancreas, very low in liver.,

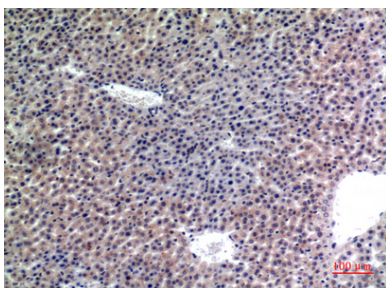
Research Area

Lysosome;

Image Data



Western blot analysis of 293T using LAMP2 antibody. Antibody was diluted at 1:1000. Secondary antibody was diluted at 1:20000



Immunohistochemical analysis of paraffin-embedded mouse-liver, antibody was diluted at 1:100