
Product Name: CD107a Rabbit Polyclonal Antibody**Catalog #: APRab08186**

For research use only.

Summary

| | |
|----------------------|---|
| Description | Rabbit polyclonal Antibody |
| Host | Rabbit |
| Application | WB,ELISA |
| Reactivity | Human,Rat,Mouse |
| Conjugation | Unconjugated |
| Modification | Unmodified |
| Isotype | IgG |
| Clonality | Polyclonal |
| Form | Liquid |
| Concentration | 1mg/ml |
| Storage | Aliquot and store at -20°C (valid for 12 months). Avoid freeze/thaw cycles. |
| Shipping | Ice bags |
| Buffer | Liquid in PBS containing 50% glycerol, 0.5% protective protein and 0.02% New type preservative N. |
| Purification | Affinity purification |

Application

| | |
|-------------------------|---------------------------------------|
| Dilution Ratio | WB 1:500-1:2000,ELISA 1:10000-1:20000 |
| Molecular Weight | 120kDa |

Antigen Information

| | |
|--------------------------|--|
| Gene Name | LAMP1 |
| Alternative Names | LAMP1; Lysosome-associated membrane glycoprotein 1; LAMP-1; Lysosome-associated membrane protein 1; CD107 antigen-like family member A; CD107a |
| Gene ID | 3916.0 |
| SwissProt ID | P11279 |
| Immunogen | The antiserum was produced against synthesized peptide derived from the Internal region of human LAMP1. AA range:211-260 |

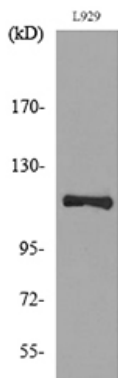
Background

The protein encoded by this gene is a member of a family of membrane glycoproteins. This glycoprotein provides selectins with carbohydrate ligands. It may also play a role in tumor cell metastasis. [provided by RefSeq, Jul 2008],function:Presents carbohydrate ligands to selectins. Also implicated in tumor cell metastasis.,PTM:O- and N-glycosylated; some of the 18 N-linked glycans are polylectosaminoglycans.,similarity:Belongs to the LAMP family.,subcellular location:This protein shuttles between lysosomes, endosomes, and the plasma membrane.,

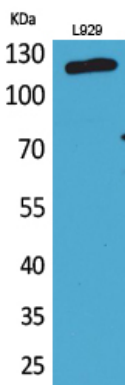
Research Area

Lysosome;

Image Data



Western blot analysis of lysate from L929 cells, using LAMP1 Antibody.



Western Blot analysis of L929 cells using CD107a Polyclonal Antibody.. Secondary antibody was diluted at 1:20000