
Product Name: CCNI Rabbit Polyclonal Antibody**Catalog #: APRab08149**

For research use only.

Summary

Description	Rabbit polyclonal Antibody
Host	Rabbit
Application	WB,ELISA
Reactivity	Human,Mouse
Conjugation	Unconjugated
Modification	Unmodified
Isotype	IgG
Clonality	Polyclonal
Form	Liquid
Concentration	1mg/ml
Storage	Aliquot and store at -20°C (valid for 12 months). Avoid freeze/thaw cycles.
Shipping	Ice bags
Buffer	Liquid in PBS containing 50% glycerol, and 0.02% New type preservative N.
Purification	Affinity purification

Application

Dilution Ratio	WB 1:500-1:2000,ELISA 1:5000-1:20000
Molecular Weight	41kDa

Antigen Information

Gene Name	CCNI
Alternative Names	
Gene ID	10983.0
SwissProt ID	Q14094
Immunogen	Synthesized peptide derived from human protein . at AA range: 30-110

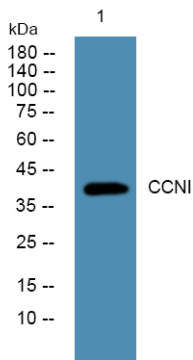
Background

The protein encoded by this gene belongs to the highly conserved cyclin family, whose members are characterized by a dramatic periodicity in protein abundance through the cell cycle. Cyclins function as regulators of CDK kinases. Different cyclins exhibit distinct expression and degradation patterns which contribute to the temporal coordination of each mitotic event. This

cyclin shows the highest similarity with cyclin G. The transcript of this gene was found to be expressed constantly during cell cycle progression. The function of this cyclin has not yet been determined. [provided by RefSeq, Jul 2008],developmental stage:Expression is independent of the cell cycle in lung fibroblasts.,similarity:Belongs to the cyclin family.,tissue specificity:Highest levels in adult heart, brain and skeletal muscle. Lower levels in adult placenta, lung, kidney and pancreas. Also high levels in fetal brain and lower levels in fetal lung, liver and kidney. Also abundant in testis and thyroid,.

Research Area

Image Data



Western blot analysis of lysates from SW480 cells, CCNI Rabbit Polyclonal Antibody was diluted at 1:1000, 4° over night