

---

**Product Name: CCK-BR Rabbit Polyclonal Antibody****Catalog #: APRab08130**

For research use only.

**Summary**

<b>Description</b>	Rabbit polyclonal Antibody
<b>Host</b>	Rabbit
<b>Application</b>	WB,ELISA
<b>Reactivity</b>	Human,Mouse,Rat,Monkey
<b>Conjugation</b>	Unconjugated
<b>Modification</b>	Unmodified
<b>Isotype</b>	IgG
<b>Clonality</b>	Polyclonal
<b>Form</b>	Liquid
<b>Concentration</b>	1mg/ml
<b>Storage</b>	Aliquot and store at -20°C (valid for 12 months). Avoid freeze/thaw cycles.
<b>Shipping</b>	Ice bags
<b>Buffer</b>	Liquid in PBS containing 50% glycerol, 0.5% protective protein and 0.02% New type preservative N.
<b>Purification</b>	Affinity purification

**Application**

<b>Dilution Ratio</b>	WB 1:500-1:2000,ELISA 1:10000-1:20000
<b>Molecular Weight</b>	48kDa

**Antigen Information**

<b>Gene Name</b>	CCKBR
<b>Alternative Names</b>	CCKBR; CCKRB; Gastrin/cholecystokinin type B receptor; CCK-B receptor; CCK-BR; Cholecystokinin-2 receptor; CCK2-R
<b>Gene ID</b>	887.0
<b>SwissProt ID</b>	P32239
<b>Immunogen</b>	The antiserum was produced against synthesized peptide derived from human CCKBR. AA range:11-60

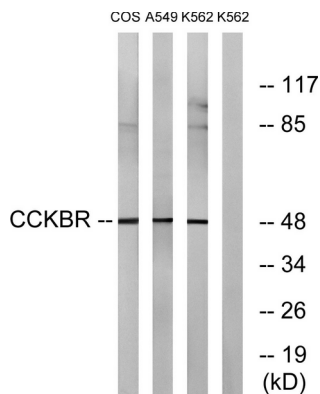
**Background**

This gene encodes a G-protein coupled receptor for gastrin and cholecystokinin (CCK), regulatory peptides of the brain and gastrointestinal tract. This protein is a type B gastrin receptor, which has a high affinity for both sulfated and nonsulfated CCK analogs and is found principally in the central nervous system and the gastrointestinal tract. Alternative splicing results in multiple transcript variants. A misspliced transcript variant including an intron has been observed in cells from colorectal and pancreatic tumors. [provided by RefSeq, Dec 2015],function:Receptor for gastrin and cholecystokinin. The CCK-B receptors occur throughout the central nervous system where they modulate anxiety, analgesia, arousal, and neuroleptic activity. This receptor mediates its action by association with G proteins that activate a phosphatidylinositol-calcium second messenger system. Isoform 2 may regulate cancer cell proliferation via a gastrin-independent mechanism.,online information:Cholecystokinin receptor entry,similarity:Belongs to the G-protein coupled receptor 1 family,tissue specificity:Isoform 1 is expressed in brain, pancreas, stomach, the colon cancer cell line LoVo and the T-lymphoblastoma Jurkat, but not in heart, placenta, liver, lung, skeletal muscle, kidney or the stomach cancer cell line AGS. Expressed at high levels in the small cell lung cancer cell line H510, at lower levels in H345, H69 and GLC28, not expressed in GLC19. Within the stomach, expressed at high levels in the mucosa of the gastric fundus and at low levels in the antrum and duodenum. Isoform 2 is present in pancreatic cancer cells and colorectal cancer cells, but not in normal pancreas or colonic mucosa. Isoform 3 is expressed in brain, pancreas, stomach, the stomach cancer cell line AGS and the colon cancer cell line LoVo.,

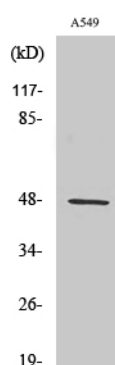
## Research Area

Calcium;Neuroactive ligand-receptor interaction;

## Image Data



Western blot analysis of lysates from A549, COS7, and K562 cells, using CCKBR Antibody. The lane on the right is blocked with the synthesized peptide.



Western Blot analysis of various cells using CCK-BR Polyclonal Antibody

