
Product Name: CCK Rabbit Polyclonal Antibody**Catalog #: APRab08127**

For research use only.

Summary

Description	Rabbit polyclonal Antibody
Host	Rabbit
Application	IHC,ICC/IF,ELISA
Reactivity	Human,Mouse,Rat
Conjugation	Unconjugated
Modification	Unmodified
Isotype	IgG
Clonality	Polyclonal
Form	Liquid
Concentration	1mg/ml
Storage	Aliquot and store at -20°C (valid for 12 months). Avoid freeze/thaw cycles.
Shipping	Ice bags
Buffer	Liquid in PBS containing 50% glycerol, 0.5% protective protein and 0.02% New type preservative N.
Purification	Affinity purification

Application

Dilution Ratio IHC 1:100-1:300,ICC/IF 1:50-1:200,ELISA 1:10000-1:20000

Molecular Weight

Antigen Information

Gene Name	CCK
Alternative Names	CCK; Cholecystokinin; CCK
Gene ID	885.0
SwissProt ID	P06307
Immunogen	The antiserum was produced against synthesized peptide derived from human CCK. AA range:46-95

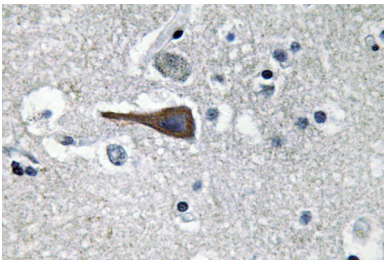
Background

This gene encodes a member of the gastrin/cholecystokinin family of proteins. The encoded preproprotein is proteolytically

processed to generate multiple protein products, including the peptide hormones cholecystokinin-8, -12, -33, and others. The encoded peptides have been shown to regulate gastric acid secretion and food intake. A sulfated form of cholecystokinin-8 may modulate neuronal activity in the brain. Alternative splicing results in multiple transcript variants. [provided by RefSeq, Nov 2015],function:This peptide hormone induces gall bladder contraction and the release of pancreatic enzymes in the gut. Its function in the brain is not clear. Binding to CCK-A receptors stimulates amylase release from the pancreas, binding to CCK-B receptors stimulates gastric acid secretion.,online information:Cholecystokinin entry,PTM:The precursor is cleaved by proteases to produce a number of active cholecystokinins.,similarity:Belongs to the gastrin/cholecystokinin family.,subunit:Binds to CCK-A receptors in the pancreas and CCK-B receptors in the brain.,

Research Area

Image Data



Immunohistochemistry analysis of CCK antibody in paraffin-embedded human brain tissue.