

Product Name: CCDC45 Rabbit Polyclonal Antibody**Catalog #: APRab08120**

For research use only.

Summary

Description	Rabbit polyclonal Antibody
Host	Rabbit
Application	WB,ELISA
Reactivity	Human,Mouse,Rat
Conjugation	Unconjugated
Modification	Unmodified
Isotype	IgG
Clonality	Polyclonal
Form	Liquid
Concentration	1mg/ml
Storage	Aliquot and store at -20°C (valid for 12 months). Avoid freeze/thaw cycles.
Shipping	Ice bags
Buffer	Liquid in PBS containing 50% glycerol, 0.5% protective protein and 0.02% New type preservative N.
Purification	Affinity purification

Application

Dilution Ratio	WB 1:500-1:2000,ELISA 1:20000-1:40000
Molecular Weight	95kDa

Antigen Information

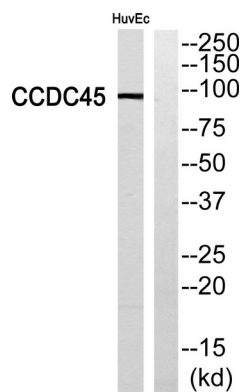
Gene Name	CEP95
Alternative Names	CEP95; CCDC45; CEP45; Centrosomal protein of 95 kDa; Coiled-coil domain-containing protein 45
Gene ID	90799.0
SwissProt ID	Q96GE4
Immunogen	The antiserum was produced against synthesized peptide derived from human CCDC45. AA range:591-640

Background

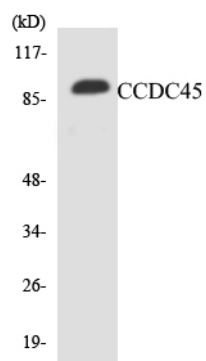
PTM:Phosphorylated upon DNA damage, probably by ATM or ATR.,PTM:Phosphorylated upon DNA damage, probably by ATM or ATR.,

Research Area

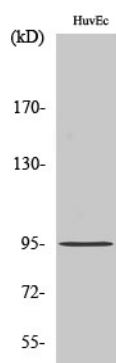
Image Data



Western blot analysis of CCDC45 Antibody. The lane on the right is blocked with the CCDC45 peptide.



Western blot analysis of the lysates from Jurkat cells using CCDC45 antibody.



Western Blot analysis of various cells using CCDC45 Polyclonal Antibody