

---

**Product Name: CCDC4 Rabbit Polyclonal Antibody****Catalog #: APRab08119**

For research use only.

**Summary**

<b>Description</b>	Rabbit polyclonal Antibody
<b>Host</b>	Rabbit
<b>Application</b>	WB,ELISA
<b>Reactivity</b>	Human,Rat,Mouse
<b>Conjugation</b>	Unconjugated
<b>Modification</b>	Unmodified
<b>Isotype</b>	IgG
<b>Clonality</b>	Polyclonal
<b>Form</b>	Liquid
<b>Concentration</b>	1mg/ml
<b>Storage</b>	Aliquot and store at -20°C (valid for 12 months). Avoid freeze/thaw cycles.
<b>Shipping</b>	Ice bags
<b>Buffer</b>	Liquid in PBS containing 50% glycerol, 0.5% protective protein and 0.02% New type preservative N.
<b>Purification</b>	Affinity purification

**Application**

<b>Dilution Ratio</b>	WB 1:500-1:2000,ELISA 1:20000-1:40000
<b>Molecular Weight</b>	57kDa

**Antigen Information**

<b>Gene Name</b>	BEND4
<b>Alternative Names</b>	BEND4; CCDC4; BEN domain-containing protein 4; Coiled-coil domain-containing protein 4
<b>Gene ID</b>	389206.0
<b>SwissProt ID</b>	Q6ZU67
<b>Immunogen</b>	The antiserum was produced against synthesized peptide derived from human BEND4. AA range:371-420

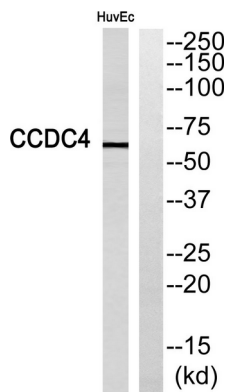
**Background**

PTM:Phosphorylated upon DNA damage, probably by ATM or ATR.,similarity:Contains 1 BEN domain.,PTM:Phosphorylated

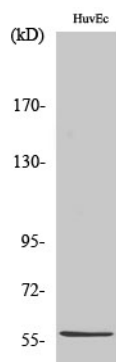
upon DNA damage, probably by ATM or ATR.,similarity:Contains 1 BEN domain.,

## Research Area

## Image Data



Western blot analysis of BEND4 Antibody. The lane on the right is blocked with the BEND4 peptide.



Western Blot analysis of various cells using CCDC4 Polyclonal Antibody