
Product Name: CCDC102B Rabbit Polyclonal Antibody**Catalog #: APRab08117**

For research use only.

Summary

Description	Rabbit polyclonal Antibody
Host	Rabbit
Application	WB,IHC,ICC/IF,ELISA
Reactivity	Human,Rat,Mouse
Conjugation	Unconjugated
Modification	Unmodified
Isotype	IgG
Clonality	Polyclonal
Form	Liquid
Concentration	1mg/ml
Storage	Aliquot and store at -20°C (valid for 12 months). Avoid freeze/thaw cycles.
Shipping	Ice bags
Buffer	Liquid in PBS containing 50% glycerol, 0.5% protective protein and 0.02% New type preservative N.
Purification	Affinity purification

Application

Dilution Ratio	WB 1:500-1:2000,IHC 1:100-1:300,ICC/IF 1:50-1:200,ELISA 1:20000-1:40000
Molecular Weight	60kDa

Antigen Information

Gene Name	CCDC102B
Alternative Names	CCDC102B; C18orf14; Coiled-coil domain-containing protein 102B
Gene ID	79839.0
SwissProt ID	Q68D86
Immunogen	The antiserum was produced against synthesized peptide derived from human CCDC102B. AA range:81-130

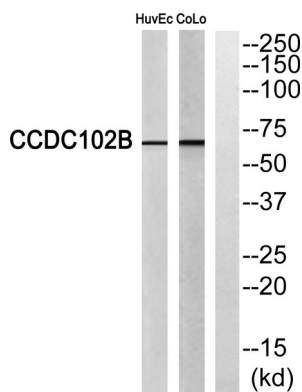
Background

CCDC102B (coiled-coil domain containing 102B), also known as AN, ACY1L or HsT1731, is a 513 amino acid protein that exists

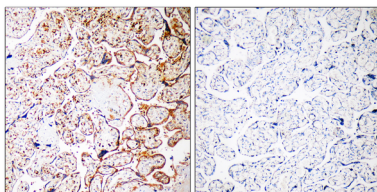
as three alternatively spliced isoforms. Widely expressed and found in multiple CNV (copy-number variant) regions, CCDC102B contains the deletion breakpoint of a maternally inherited deletion, which is 2.7Mb in size, and maps to human chromosome 18q22.1. CCDC102B may play a role in the pathogenesis of diaphragmatic hernia, microphthalmia, colorectal carcinoma and schizophrenia. Encoding over 300 genes, chromosome 18 contains about 76 million bases. Translocation between chromosomes 18 and 14 is the most common translocation in cancers and occurs in follicular lymphomas. Niemann-Pick disease, hereditary hemorrhagic telangiectasia and erythropoietic protoporphyria are associated with chromosome 18.

Research Area

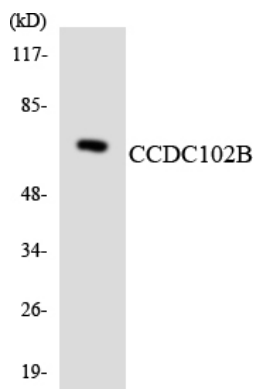
Image Data



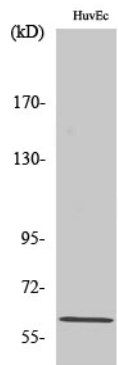
Western blot analysis of CCDC102B Antibody. The lane on the right is blocked with the CCDC102B peptide.



Immunohistochemistry analysis of paraffin-embedded human placenta, using CCDC102B Antibody. The lane on the right is blocked with the CCDC102B peptide.



Western blot analysis of the lysates from HUVEC cells using CCDC102B antibody.



Western Blot analysis of various cells using CCDC102B Polyclonal Antibody diluted at 1: 1000