

---

**Product Name: CCDC102A Rabbit Polyclonal Antibody****Catalog #: APRab08116**

For research use only.

**Summary**

<b>Description</b>	Rabbit polyclonal Antibody
<b>Host</b>	Rabbit
<b>Application</b>	WB,ELISA
<b>Reactivity</b>	Human,Mouse
<b>Conjugation</b>	Unconjugated
<b>Modification</b>	Unmodified
<b>Isotype</b>	IgG
<b>Clonality</b>	Polyclonal
<b>Form</b>	Liquid
<b>Concentration</b>	1mg/ml
<b>Storage</b>	Aliquot and store at -20°C (valid for 12 months). Avoid freeze/thaw cycles.
<b>Shipping</b>	Ice bags
<b>Buffer</b>	Liquid in PBS containing 50% glycerol, 0.5% protective protein and 0.02% New type preservative N.
<b>Purification</b>	Affinity purification

**Application**

<b>Dilution Ratio</b>	WB 1:500-1:2000,ELISA 1:10000-1:20000
<b>Molecular Weight</b>	55kDa

**Antigen Information**

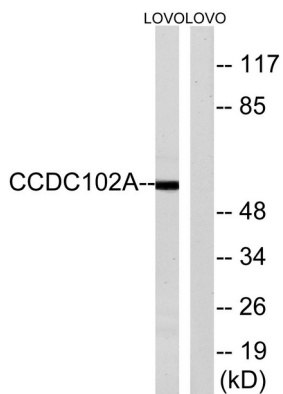
<b>Gene Name</b>	CCDC102A
<b>Alternative Names</b>	CCDC102A; Coiled-coil domain-containing protein 102A
<b>Gene ID</b>	92922.0
<b>SwissProt ID</b>	Q96A19
<b>Immunogen</b>	The antiserum was produced against synthesized peptide derived from human CCDC102A. AA range:341-390

**Background**

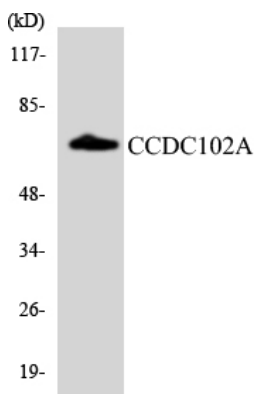
CCDC102A (Coiled-Coil Domain Containing 102A) is a Protein Coding gene. An important paralog of this gene isCCDC102B.

## Research Area

## Image Data



Western blot analysis of lysates from LOVO cells, using CCDC102A Antibody. The lane on the right is blocked with the synthesized peptide.



Western blot analysis of the lysates from HepG2 cells using CCDC102A antibody.