

Product Name: CBX6 Rabbit Polyclonal Antibody
Catalog #: APRab08058



Summary

Production Name	CBX6 Rabbit Polyclonal Antibody
Description	Rabbit Polyclonal Antibody
Host	Rabbit
Application	WB,IHC-P,IF-P,IF-F,ICC/IF,ELISA
Reactivity	Human,Mouse,Rat

Performance

Conjugation	Unconjugated
Modification	Unmodified
Isotype	IgG
Clonality	Polyclonal
Form	Liquid
Storage	Store at 4°C short term. Aliquot and store at -20°C long term. Avoid freeze/thaw cycles.
Buffer	Liquid in PBS containing 50% glycerol, 0.5% protective protein and 0.02% New type preservative N.
Purification	Affinity purification

Immunogen

Gene Name	CBX6
Alternative Names	CBX6; Chromobox protein homolog 6
Gene ID	23466.0
SwissProt ID	O95503.The antiserum was produced against synthesized peptide derived from human CBX6. AA range:10-59

Application

Dilution Ratio	WB 1:500-1:2000, IHC-P 1:100-1:300, ELISA 1:20000, IF-P/IF-F/ICC/IF 1:50-200
Molecular Weight	44kDa

Product Name: CBX6 Rabbit Polyclonal Antibody
Catalog #: AP Rab08058

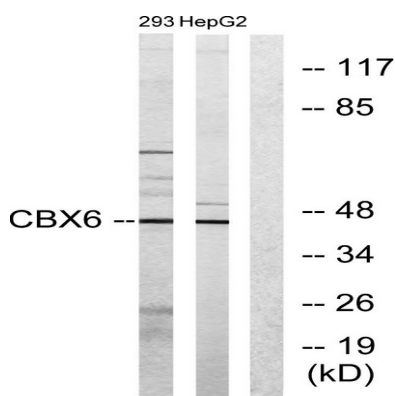


Background

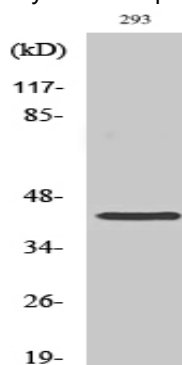
function:Involved in maintaining the transcriptionally repressive state of genes. Modifies chromatin, rendering it heritably changed in its expressibility.,similarity:Contains 1 chromo domain.,subunit:Component of the chromatin-associated polycomb complex (PcG),function:Involved in maintaining the transcriptionally repressive state of genes. Modifies chromatin, rendering it heritably changed in its expressibility.,similarity:Contains 1 chromo domain.,subunit:Component of the chromatin-associated polycomb complex (PcG),

Research Area

Image Data



Western blot analysis of lysates from 293 and HepG2 cells, using CBX6 Antibody. The lane on the right is blocked with the synthesized peptide.



Western Blot analysis of various cells using CBX6 Polyclonal Antibody cells nucleus extracted by Minute TM Cytoplasmic and Nuclear Fractionation kit (SC-003, Invent biotech, MN, USA) .

Note

For research use only.