

**Product Name: CB1 Rabbit Polyclonal Antibody****Catalog #: APRab08032**

For research use only.

**Summary**

<b>Description</b>	Rabbit polyclonal Antibody
<b>Host</b>	Rabbit
<b>Application</b>	WB,IHC,ICC/IF,ELISA
<b>Reactivity</b>	Human,Mouse,Rat,Monkey
<b>Conjugation</b>	Unconjugated
<b>Modification</b>	Unmodified
<b>Isotype</b>	IgG
<b>Clonality</b>	Polyclonal
<b>Form</b>	Liquid
<b>Concentration</b>	1mg/ml
<b>Storage</b>	Aliquot and store at -20°C (valid for 12 months). Avoid freeze/thaw cycles.
<b>Shipping</b>	Ice bags
<b>Buffer</b>	Liquid in PBS containing 50% glycerol, 0.5% protective protein and 0.02% New type preservative N.
<b>Purification</b>	Affinity purification

**Application**

<b>Dilution Ratio</b>	WB 1:500-1:2000,IHC 1:100-1:300,ICC/IF 1:200-1:1000,ELISA 1:5000-1:20000
<b>Molecular Weight</b>	53kDa

**Antigen Information**

<b>Gene Name</b>	CNR1
<b>Alternative Names</b>	CNR1; CNR; Cannabinoid receptor 1; CB-R; CB1; CANN6
<b>Gene ID</b>	1268.0
<b>SwissProt ID</b>	P21554
<b>Immunogen</b>	The antiserum was produced against synthesized peptide derived from human CNR1. AA range:151-200

**Background**

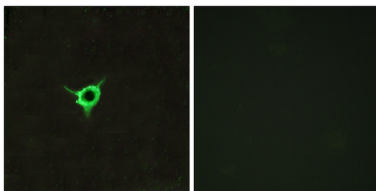
This gene encodes one of two cannabinoid receptors. The cannabinoids, principally delta-9-tetrahydrocannabinol and

synthetic analogs, are psychoactive ingredients of marijuana. The cannabinoid receptors are members of the guanine-nucleotide-binding protein (G-protein) coupled receptor family, which inhibit adenylate cyclase activity in a dose-dependent, stereoselective and pertussis toxin-sensitive manner. The two receptors have been found to be involved in the cannabinoid-induced CNS effects (including alterations in mood and cognition) experienced by users of marijuana. Multiple transcript variants encoding two different protein isoforms have been described for this gene. [provided by RefSeq, May 2009],function:Involved in cannabinoid-induced CNS effects. Acts by inhibiting adenylate cyclase. Could be a receptor for anandamide. Inhibits L-type Ca(2+) channel current. Isoform 2 and isoform 3 have altered ligand binding.,similarity:Belongs to the G-protein coupled receptor 1 family.,subunit:Interacts (via C-terminus) with CNRIP1.,tissue specificity:Widely expressed.,

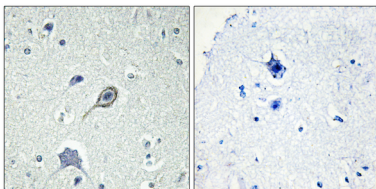
## Research Area

Neuroactive ligand-receptor interaction;

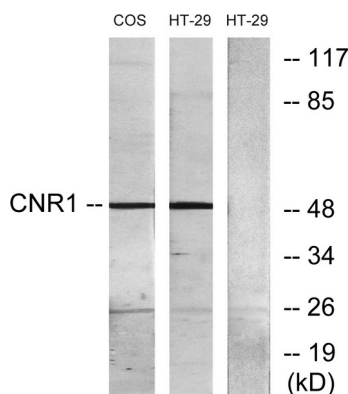
## Image Data



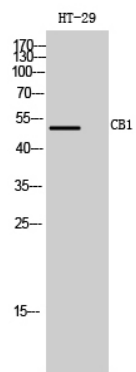
Immunofluorescence analysis of LOVO cells, using CNR1 Antibody. The picture on the right is blocked with the synthesized peptide.



Immunohistochemistry analysis of paraffin-embedded human brain tissue, using CNR1 Antibody. The picture on the right is blocked with the synthesized peptide.



Western blot analysis of lysates from HT-29 and COS7 cells, using CNR1 Antibody. The lane on the right is blocked with the synthesized peptide.



Western Blot analysis of HT-29 cells using CB1 Polyclonal Antibody