

---

**Product Name: Cathepsin H Rabbit Polyclonal Antibody****Catalog #: APRab08013**

For research use only.

**Summary**

<b>Description</b>	Rabbit polyclonal Antibody
<b>Host</b>	Rabbit
<b>Application</b>	WB,ICC/IF,ELISA
<b>Reactivity</b>	Human,Rat,Mouse
<b>Conjugation</b>	Unconjugated
<b>Modification</b>	Unmodified
<b>Isotype</b>	IgG
<b>Clonality</b>	Polyclonal
<b>Form</b>	Liquid
<b>Concentration</b>	1mg/ml
<b>Storage</b>	Aliquot and store at -20°C (valid for 12 months). Avoid freeze/thaw cycles.
<b>Shipping</b>	Ice bags
<b>Buffer</b>	Liquid in PBS containing 50% glycerol, 0.5% protective protein and 0.02% New type preservative N.
<b>Purification</b>	Affinity purification

**Application**

<b>Dilution Ratio</b>	WB 1:500-1:2000,ICC/IF 1:50-1:200,ELISA 1:10000-1:20000
<b>Molecular Weight</b>	40kDa

**Antigen Information**

<b>Gene Name</b>	CTSH
<b>Alternative Names</b>	CTSH; CPSB; Pro-cathepsin H
<b>Gene ID</b>	1512.0
<b>SwissProt ID</b>	P09668
<b>Immunogen</b>	Synthesized peptide derived from Cathepsin H . at AA range: 70-150

**Background**

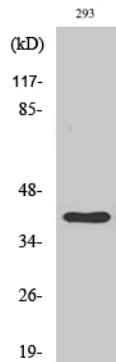
The protein encoded by this gene is a lysosomal cysteine proteinase important in the overall degradation of lysosomal proteins. It is composed of a dimer of disulfide-linked heavy and light chains, both produced from a single protein precursor. The

encoded protein, which belongs to the peptidase C1 protein family, can act both as an aminopeptidase and as an endopeptidase. Increased expression of this gene has been correlated with malignant progression of prostate tumors. Alternate splicing of this gene results in multiple transcript variants encoding different isoforms. [provided by RefSeq, Jan 2016],catalytic activity:Hydrolysis of proteins, acting as an aminopeptidase (notably, cleaving Arg-|-Xaa bonds) as well as an endopeptidase.,function:Important for the overall degradation of proteins in lysosomes.,similarity:Belongs to the peptidase C1 family.,subunit:Composed of a mini chain and a large chain. The large chain may be split into heavy and light chain. All chains are held together by disulfide bonds.,

## Research Area

Lysosome;

## Image Data



Western Blot analysis of various cells using Cathepsin H Polyclonal Antibody