

---

**Product Name: Catenin- $\alpha$  E/N Rabbit Polyclonal Antibody****Catalog #: APRab08002**

For research use only.

**Summary**

<b>Description</b>	Rabbit polyclonal Antibody
<b>Host</b>	Rabbit
<b>Application</b>	WB,IHC,ICC/IF,ELISA
<b>Reactivity</b>	Human,Mouse,Rat
<b>Conjugation</b>	Unconjugated
<b>Modification</b>	Unmodified
<b>Isotype</b>	IgG
<b>Clonality</b>	Polyclonal
<b>Form</b>	Liquid
<b>Concentration</b>	1mg/ml
<b>Storage</b>	Aliquot and store at -20°C (valid for 12 months). Avoid freeze/thaw cycles.
<b>Shipping</b>	Ice bags
<b>Buffer</b>	Liquid in PBS containing 50% glycerol, 0.5% protective protein and 0.02% New type preservative N.
<b>Purification</b>	Affinity purification

**Application**

<b>Dilution Ratio</b>	WB 1:500-1:2000,IHC 1:100-1:300,ICC/IF 1:200-1:1000,ELISA 1:5000-1:10000
<b>Molecular Weight</b>	100kDa

**Antigen Information**

<b>Gene Name</b>	CTNNA1/CTNNA2 CTNNA1; Catenin alpha-1; Alpha E-catenin; Cadherin-associated protein; Renal carcinoma
<b>Alternative Names</b>	antigen NY-REN-13; CTNNA2; CAPR; Catenin alpha-2; Alpha N-catenin; Alpha-catenin-related protein
<b>Gene ID</b>	1495/1496
<b>SwissProt ID</b>	P35221/P26232
<b>Immunogen</b>	The antiserum was produced against synthesized peptide derived from human Catenin-alpha1. AA range:857-906

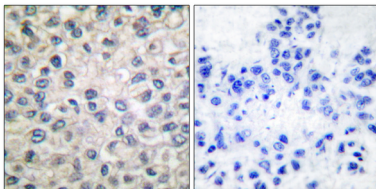
## Background

catenin alpha 1 (CTNNA1) Homo sapiens This gene encodes a member of the catenin family of proteins that play an important role in cell adhesion process by connecting cadherins located on the plasma membrane to the actin filaments inside the cell. The encoded mechanosensing protein contains three vinculin homology domains and undergoes conformational changes in response to cytoskeletal tension, resulting in the reconfiguration of cadherin-actin filament connections. Certain mutations in this gene cause butterfly-shaped pigment dystrophy. [provided by RefSeq, May 2016],disease:Abnormalities of alpha-catenin are involved in the process of cancer invasion and metastasis.,function:Associates with the cytoplasmic domain of a variety of cadherins. The association of catenins to cadherins produces a complex which is linked to the actin filament network, and which seems to be of primary importance for cadherins cell-adhesion properties. May play a crucial role in cell differentiation.,PTM:Sumoylated.,similarity:Belongs to the vinculin/alpha-catenin family.,subcellular location:Found at cell-cell boundaries and probably at cell-matrix boundaries.,subunit:Binds MLLT4 and F-actin (By similarity). Interacts directly with PSEN1 and CTNNA1 to form part of the PSEN1/cadherin/catenin adhesion complex. Interacts with ARHGAP21 and with JUB.,tissue specificity:Expressed ubiquitously in normal tissues.,

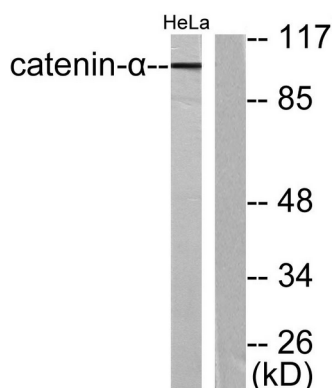
## Research Area

Adherens\_Junction;Adherens\_Junction;Leukocyte transendothelial migration;Pathways in cancer;Endometrial cancer;Arrhythmogenic right ventricular cardiomyopathy (ARVC);

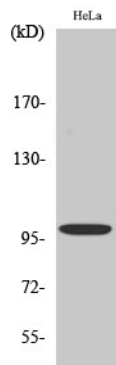
## Image Data



Immunohistochemistry analysis of paraffin-embedded human breast carcinoma tissue, using Catenin-alpha1 Antibody. The picture on the right is blocked with the synthesized peptide.



Western blot analysis of lysates from HeLa cells, using Catenin-alpha1 Antibody. The lane on the right is blocked with the synthesized peptide.



Western Blot analysis of various cells using Catenin- $\alpha$  E/N Polyclonal Antibody diluted at 1: 500