
Product Name: Casein Kinase I γ 1/2/3 Rabbit Polyclonal Antibody**Catalog #: APRab07944**

For research use only.

Summary

Description	Rabbit polyclonal Antibody
Host	Rabbit
Application	IHC, ICC/IF, ELISA
Reactivity	Human, Mouse, Rat
Conjugation	Unconjugated
Modification	Unmodified
Isotype	IgG
Clonality	Polyclonal
Form	Liquid
Concentration	1mg/ml
Storage	Aliquot and store at -20°C (valid for 12 months). Avoid freeze/thaw cycles.
Shipping	Ice bags
Buffer	Liquid in PBS containing 50% glycerol, 0.5% protective protein and 0.02% New type preservative N.
Purification	Affinity purification

Application

Dilution Ratio IHC 1:100-1:300, ICC/IF 1:50-1:200, ELISA 1:20000-1:40000

Molecular Weight

Antigen Information

Gene Name	CSNK1G1/CSNK1G2/CSNK1G3 CSNK1G1; Casein kinase I isoform gamma-1; CKI-gamma 1; CSNK1G2; CK1G2; Casein kinase
Alternative Names	I isoform gamma-2; CKI-gamma 2; CSNK1G3; Casein kinase I isoform gamma-3; CKI-gamma 3
Gene ID	53944/1455/1456
SwissProt ID	Q9HCP0/P78368/Q9Y6M4
Immunogen	The antiserum was produced against synthesized peptide derived from human CK-1gamma1/2/3. AA range:229-278

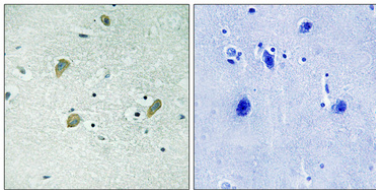
Background

This gene encodes a member of the casein kinase I gene family. This family is comprised of serine/threonine kinases that phosphorylate acidic proteins such as caseins. The encoded kinase plays a role in cell cycle checkpoint arrest in response to stalled replication forks by phosphorylating Claspin. A mutation in this gene may be associated with non-syndromic early-onset epilepsy (NSEOE). [provided by RefSeq, Jul 2016],catalytic activity:ATP + a protein = ADP + a phosphoprotein.,function:Casein kinases are operationally defined by their preferential utilization of acidic proteins such as caseins as substrates. It can phosphorylate a large number of proteins. Participates in Wnt signaling.,PTM:Autophosphorylated.,similarity:Belongs to the protein kinase superfamily.,similarity:Belongs to the protein kinase superfamily. CK1 Ser/Thr protein kinase family. Casein kinase I subfamily.,similarity:Contains 1 protein kinase domain.,subunit:Monomer.,

Research Area

Hedgehog;

Image Data



Immunohistochemical analysis of paraffin-embedded Human brain. Antibody was diluted at 1:100 (4°,overnight) . High-pressure and temperature Tris-EDTA,pH8.0 was used for antigen retrieval. Negative contrl (right) obtained from antibody was pre-absorbed by immunogen peptide.