
Product Name: Casein Kinase Iy1 Rabbit Polyclonal Antibody**Catalog #: APRab07943**

For research use only.

Summary

Description	Rabbit polyclonal Antibody
Host	Rabbit
Application	WB,IHC,ICC/IF,ELISA
Reactivity	Human,Mouse,Rat,Monkey
Conjugation	Unconjugated
Modification	Unmodified
Isotype	IgG
Clonality	Polyclonal
Form	Liquid
Concentration	1mg/ml
Storage	Aliquot and store at -20°C (valid for 12 months). Avoid freeze/thaw cycles.
Shipping	Ice bags
Buffer	Liquid in PBS containing 50% glycerol, 0.5% protective protein and 0.02% New type preservative N.
Purification	Affinity purification

Application

Dilution Ratio	WB 1:500-1:2000,IHC 1:100-1:300,ICC/IF 1:200-1:1000,ELISA 1:10000-1:20000
Molecular Weight	49kDa

Antigen Information

Gene Name	CSNK1G1
Alternative Names	CSNK1G1; Casein kinase I isoform gamma-1; CKI-gamma 1
Gene ID	53944.0
SwissProt ID	Q9HCP0
Immunogen	The antiserum was produced against synthesized peptide derived from human CKI-gamma1. AA range:1-50

Background

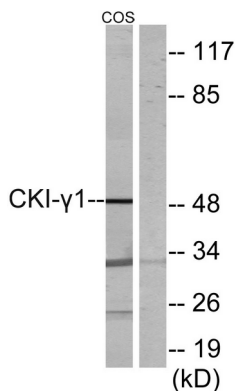
This gene encodes a member of the casein kinase I gene family. This family is comprised of serine/threonine kinases that

phosphorylate acidic proteins such as caseins. The encoded kinase plays a role in cell cycle checkpoint arrest in response to stalled replication forks by phosphorylating Claspin. A mutation in this gene may be associated with non-syndromic early-onset epilepsy (NSEOE). [provided by RefSeq, Jul 2016],catalytic activity:ATP + a protein = ADP + a phosphoprotein.,function:Casein kinases are operationally defined by their preferential utilization of acidic proteins such as caseins as substrates. It can phosphorylate a large number of proteins. Participates in Wnt signaling.,PTM:Autophosphorylated.,similarity:Belongs to the protein kinase superfamily.,similarity:Belongs to the protein kinase superfamily. CK1 Ser/Thr protein kinase family. Casein kinase I subfamily.,similarity:Contains 1 protein kinase domain.,subunit:Monomer.,

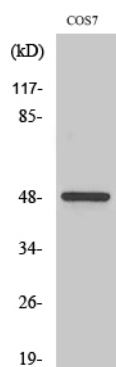
Research Area

Hedgehog;

Image Data



Western blot analysis of lysates from COS7 cells, using CKI-gamma1 Antibody. The lane on the right is blocked with the synthesized peptide.



Western Blot analysis of various cells using Casein Kinase Iy1 Polyclonal Antibody