
Product Name: Casein Kinase I α 1/1L Rabbit Polyclonal Antibody**Catalog #: APRab07939**

For research use only.

Summary

Description	Rabbit polyclonal Antibody
Host	Rabbit
Application	WB,IHC,ICC/IF,ELISA
Reactivity	Human,Mouse,Rat
Conjugation	Unconjugated
Modification	Unmodified
Isotype	IgG
Clonality	Polyclonal
Form	Liquid
Concentration	1mg/ml
Storage	Aliquot and store at -20°C (valid for 12 months). Avoid freeze/thaw cycles.
Shipping	Ice bags
Buffer	Liquid in PBS containing 50% glycerol, 0.5% protective protein and 0.02% New type preservative N.
Purification	Affinity purification

Application

Dilution Ratio	WB 1:500-1:2000,IHC 1:100-1:300,ICC/IF 1:200-1:1000,ELISA 1:10000-1:20000
Molecular Weight	30kDa

Antigen Information

Gene Name	CSNK1A1/CSNK1A1L
Alternative Names	CSNK1A1L; Casein kinase I isoform alpha-like; CKI-alpha-like; CK1; CSNK1A1; Casein kinase I isoform alpha; CKI-alpha; CK1
Gene ID	122011/1452
SwissProt ID	Q8N752/P48729
Immunogen	The antiserum was produced against synthesized peptide derived from human CKI-alpha1/L. AA range:141-190

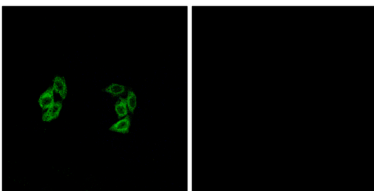
Background

catalytic activity:ATP + a protein = ADP + a phosphoprotein.,function:Casein kinases are operationally defined by their preferential utilization of acidic proteins such as caseins as substrates. It can phosphorylate a large number of proteins. Participates in Wnt signaling.,similarity:Belongs to the protein kinase superfamily. CK1 Ser/Thr protein kinase family. Casein kinase I subfamily.,similarity:Contains 1 protein kinase domain.,catalytic activity:ATP + a protein = ADP + a phosphoprotein.,function:Casein kinases are operationally defined by their preferential utilization of acidic proteins such as caseins as substrates. It can phosphorylate a large number of proteins. Participates in Wnt signaling.,similarity:Belongs to the protein kinase superfamily. CK1 Ser/Thr protein kinase family. Casein kinase I subfamily.,similarity:Contains 1 protein kinase domain.,

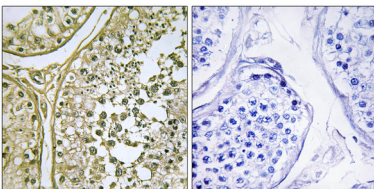
Research Area

WNT;WNT-T CELLHedgehog;

Image Data



Immunofluorescence analysis of A549 cells, using CKI-alpha1/L Antibody. The picture on the right is blocked with the synthesized peptide.



Immunohistochemistry analysis of paraffin-embedded human testis tissue, using CKI-alpha1/L Antibody. The picture on the right is blocked with the synthesized peptide.