
Product Name: CARD 14 Rabbit Polyclonal Antibody**Catalog #: APRab07925**

For research use only.

Summary

Description	Rabbit polyclonal Antibody
Host	Rabbit
Application	IHC,ICC/IF,ELISA
Reactivity	Human,Mouse
Conjugation	Unconjugated
Modification	Unmodified
Isotype	IgG
Clonality	Polyclonal
Form	Liquid
Concentration	1mg/ml
Storage	Aliquot and store at -20°C (valid for 12 months). Avoid freeze/thaw cycles.
Shipping	Ice bags
Buffer	Liquid in PBS containing 50% glycerol, 0.5% protective protein and 0.02% New type preservative N.
Purification	Affinity purification

Application

Dilution Ratio	IHC 1:100-1:300,ICC/IF 1:200-1:1000,ELISA 1:20000-1:40000
Molecular Weight	110kDa

Antigen Information

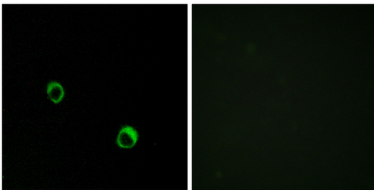
Gene Name	CARD14
Alternative Names	CARD14; CARMA2; Caspase recruitment domain-containing protein 14; CARD-containing MAGUK protein 2; Carma 2
Gene ID	79092.0
SwissProt ID	Q9BXL6
Immunogen	The antiserum was produced against synthesized peptide derived from human CAR14. AA range:291-340

Background

This gene encodes a caspase recruitment domain-containing protein that is a member of the membrane-associated guanylate kinase (MAGUK) family of proteins. Members of this protein family are scaffold proteins that are involved in a diverse array of cellular processes including cellular adhesion, signal transduction and cell polarity control. This protein has been shown to specifically interact with BCL10, a protein known to function as a positive regulator of cell apoptosis and NF-kappaB activation. Alternate splicing results in multiple transcript variants. [provided by RefSeq, Apr 2012],caution:Supposed to contain a SH3 domain which is not detected by PROSITE, Pfam or SMART.,function:Activates NF-kappa-B via BCL10 and IKK. Stimulates the phosphorylation of BCL10.,similarity:Contains 1 CARD domain.,similarity:Contains 1 guanylate kinase-like domain.,similarity:Contains 1 PDZ (DHR) domain.,subunit:CARD14 and BCL10 bind to each other by CARD-CARD interaction.,tissue specificity:Expressed in placenta. Also detected in HeLa S3 cells, but not in the other cancer cell lines tested.,

Research Area

Image Data



Immunofluorescence analysis of MCF7 cells, using CAR14 Antibody. The picture on the right is blocked with the synthesized peptide.