
Product Name: CARD 11 Rabbit Polyclonal Antibody**Catalog #: APRab07924**

For research use only.

Summary

Description	Rabbit polyclonal Antibody
Host	Rabbit
Application	WB,IHC,ICC/IF,ELISA
Reactivity	Human,Mouse
Conjugation	Unconjugated
Modification	Unmodified
Isotype	IgG
Clonality	Polyclonal
Form	Liquid
Concentration	1mg/ml
Storage	Aliquot and store at -20°C (valid for 12 months). Avoid freeze/thaw cycles.
Shipping	Ice bags
Buffer	Liquid in PBS containing 50% glycerol, 0.5% protective protein and 0.02% New type preservative N.
Purification	Affinity purification

Application

Dilution Ratio	WB 1:500-1:2000,IHC 1:100-1:300,ICC/IF 1:200-1:1000,ELISA 1:20000-1:40000
Molecular Weight	130kDa

Antigen Information

Gene Name	CARD11
Alternative Names	CARD11; CARMA1; Caspase recruitment domain-containing protein 11; CARD-containing MAGUK protein 1; Carma 1
Gene ID	84433.0
SwissProt ID	Q9BXL7
Immunogen	The antiserum was produced against synthesized peptide derived from human CARD11. AA range:10-59

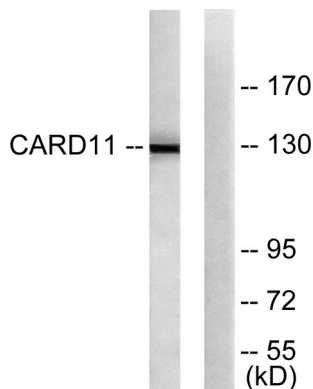
Background

The protein encoded by this gene belongs to the membrane-associated guanylate kinase (MAGUK) family, a class of proteins that functions as molecular scaffolds for the assembly of multiprotein complexes at specialized regions of the plasma membrane. This protein is also a member of the CARD protein family, which is defined by carrying a characteristic caspase-associated recruitment domain (CARD). This protein has a domain structure similar to that of CARD14 protein. The CARD domains of both proteins have been shown to specifically interact with BCL10, a protein known to function as a positive regulator of cell apoptosis and NF-kappaB activation. When expressed in cells, this protein activated NF-kappaB and induced the phosphorylation of BCL10. [provided by RefSeq, Jul 2008],caution:Supposed to contain a SH3 domain which is not detected by PROSITE, Pfam or SMART.,function:Activates NF-kappa-B via BCL10 and IKK. Stimulates the phosphorylation of BCL10.,similarity:Contains 1 CARD domain.,similarity:Contains 1 guanylate kinase-like domain.,similarity:Contains 1 PDZ (DHR) domain.,subunit:CARD11 and BCL10 bind to each other by CARD-CARD interaction.,tissue specificity:Detected in adult peripheral blood leukocytes, thymus, spleen and liver. Also found in promyelocytic leukemia HL-60 cells, chronic myelogenous leukemia K562 cells, Burkitt's lymphoma Raji cells and colorectal adenocarcinoma SW480 cells. Not detected in HeLa S3, Molt-4, A549 and G431 cells.,

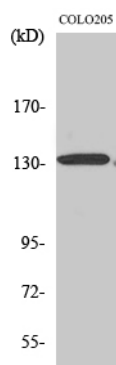
Research Area

T_Cell_Receptor;B_Cell_Antigen;

Image Data



Western blot analysis of lysates from COLO205 cells, using CARD11 Antibody. The lane on the right is blocked with the synthesized peptide.



Western Blot analysis of various cells using CARD 11 Polyclonal Antibody