
Product Name: CARD 10 Rabbit Polyclonal Antibody**Catalog #: APRab07923**

For research use only.

Summary

Description	Rabbit polyclonal Antibody
Host	Rabbit
Application	WB,IHC,ICC/IF,ELISA
Reactivity	Human,Mouse
Conjugation	Unconjugated
Modification	Unmodified
Isotype	IgG
Clonality	Polyclonal
Form	Liquid
Concentration	1mg/ml
Storage	Aliquot and store at -20°C (valid for 12 months). Avoid freeze/thaw cycles.
Shipping	Ice bags
Buffer	Liquid in PBS containing 50% glycerol, 0.5% protective protein and 0.02% New type preservative N.
Purification	Affinity purification

Application

Dilution Ratio	WB 1:500-1:2000,IHC 1:100-1:300,ICC/IF 1:200-1:1000,ELISA 1:5000-1:20000
Molecular Weight	120kDa

Antigen Information

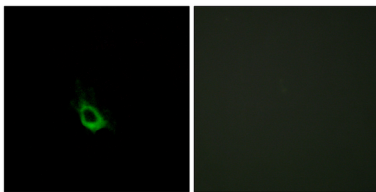
Gene Name	CARD10
Alternative Names	CARD10; CARMA3; Caspase recruitment domain-containing protein 10; CARD-containing MAGUK protein 3; Carma 3
Gene ID	29775.0
SwissProt ID	Q9BWT7
Immunogen	The antiserum was produced against synthesized peptide derived from human CARD10. AA range:481-530

Background

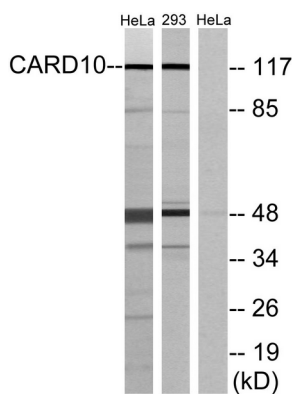
The caspase recruitment domain (CARD) is a protein module that consists of 6 or 7 antiparallel alpha helices. It participates in apoptosis signaling through highly specific protein-protein homophilic interactions. Like several other CARD proteins, CARD10 belongs to the membrane-associated guanylate kinase (MAGUK) family and activates NF-kappa-B (NFKB; see MIM 164011) through BCL10 (MIM 603517) (Wang et al., 2001 [PubMed 11259443]).[supplied by OMIM, Mar 2008],caution:Supposed to contain a SH3, a PDZ and a guanylate kinase-like domain. But none of these 3 domains are detected by PROSITE, Pfam or SMART.,function:Activates NF-kappa-B via BCL10 and IKK.,similarity:Contains 1 CARD domain.,subunit:CARD10 and BCL10 bind to each other by CARD-CARD interaction. They both participate in a complex with MALT1, where MALT1 binds to BCL10.,tissue specificity:Detected in adult heart, kidney and liver; lower levels in intestine, placenta, muscle and lung. Also found in fetal lung, liver and kidney.,

Research Area

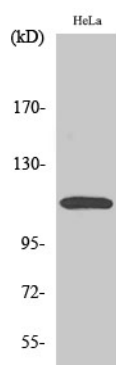
Image Data



Immunofluorescence analysis of HeLa cells, using CARD10 Antibody. The picture on the right is blocked with the synthesized peptide.



Western blot analysis of lysates from HeLa and 293 cells, using CARD10 Antibody. The lane on the right is blocked with the synthesized peptide.



Western Blot analysis of various cells using CARD 10 Polyclonal Antibody