

---

**Product Name: Carbonyl Reductase 3 Rabbit Polyclonal Antibody****Catalog #: APRab07922**

For research use only.

**Summary**

<b>Description</b>	Rabbit polyclonal Antibody
<b>Host</b>	Rabbit
<b>Application</b>	WB,IHC,ICC/IF,ELISA
<b>Reactivity</b>	Human,Mouse,Rat
<b>Conjugation</b>	Unconjugated
<b>Modification</b>	Unmodified
<b>Isotype</b>	IgG
<b>Clonality</b>	Polyclonal
<b>Form</b>	Liquid
<b>Concentration</b>	1mg/ml
<b>Storage</b>	Aliquot and store at -20°C (valid for 12 months). Avoid freeze/thaw cycles.
<b>Shipping</b>	Ice bags
<b>Buffer</b>	Liquid in PBS containing 50% glycerol, 0.5% protective protein and 0.02% New type preservative N.
<b>Purification</b>	Affinity purification

**Application**

<b>Dilution Ratio</b>	WB 1:500-1:2000,IHC 1:100-1:300,ICC/IF 1:50-1:200,ELISA 1:20000-1:40000
<b>Molecular Weight</b>	31kDa

**Antigen Information**

<b>Gene Name</b>	CBR3
<b>Alternative Names</b>	CBR3; Carbonyl reductase [NADPH] 3; NADPH-dependent carbonyl reductase 3
<b>Gene ID</b>	874.0
<b>SwissProt ID</b>	O75828
<b>Immunogen</b>	The antiserum was produced against synthesized peptide derived from human CBR3. AA range:151-200

**Background**

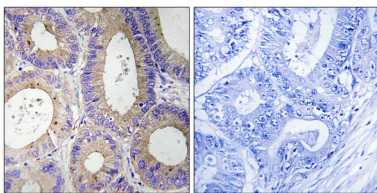
Carbonyl reductase 3 catalyzes the reduction of a large number of biologically and pharmacologically active carbonyl

compounds to their corresponding alcohols. The enzyme is classified as a monomeric NADPH-dependent oxidoreductase. CBR3 contains three exons spanning 11.2 kilobases and is closely linked to another carbonyl reductase gene - CBR1. [provided by RefSeq, Jul 2008], catalytic activity: R-CHOH-R' + NADP(+) = R-CO-R' + NADPH., similarity: Belongs to the short-chain dehydrogenases/reductases (SDR) family.,

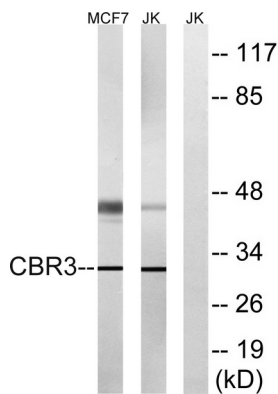
## Research Area

Arachidonic acid metabolism;

## Image Data



Immunohistochemistry analysis of paraffin-embedded human colon carcinoma tissue, using CBR3 Antibody. The picture on the right is blocked with the synthesized peptide.



Western blot analysis of lysates from Jurkat and MCF7 cells, using CBR3 Antibody. The lane on the right is blocked with the synthesized peptide.



Western Blot analysis of various cells using Carbonyl Reductase 3 Polyclonal Antibody