

Product Name: CaMKV Rabbit Polyclonal Antibody**Catalog #: APRab07897**

For research use only.

Summary

Description	Rabbit polyclonal Antibody
Host	Rabbit
Application	WB,IHC,ICC/IF,ELISA
Reactivity	Human,Mouse,Rat
Conjugation	Unconjugated
Modification	Unmodified
Isotype	IgG
Clonality	Polyclonal
Form	Liquid
Concentration	1mg/ml
Storage	Aliquot and store at -20°C (valid for 12 months). Avoid freeze/thaw cycles.
Shipping	Ice bags
Buffer	Liquid in PBS containing 50% glycerol, 0.5% protective protein and 0.02% New type preservative N.
Purification	Affinity purification

Application

Dilution Ratio	WB 1:500-1:2000,IHC 1:100-1:300,ICC/IF 1:200-1:1000,ELISA 1:5000-1:20000
Molecular Weight	54kDa

Antigen Information

Gene Name	CAMKV
Alternative Names	CAMKV; CaM kinase-like vesicle-associated protein
Gene ID	79012.0
SwissProt ID	Q8NCB2
Immunogen	The antiserum was produced against synthesized peptide derived from human CAMK5. AA range:211-260

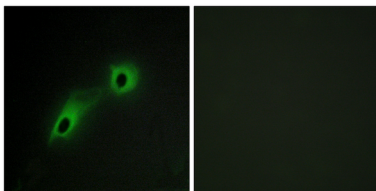
Background

cofactor:Calcium.,domain:The protein kinase domain is predicted to be catalytically inactive.,function:Does not appear to have

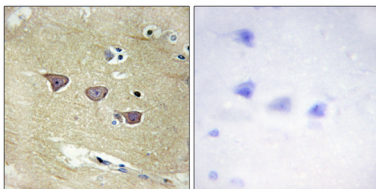
detectable kinase activity.,similarity:Belongs to the protein kinase superfamily. CAMK Ser/Thr protein kinase family.,similarity:Contains 1 protein kinase domain.,subcellular location:Predominantly observed in association with the plasma membrane of soma and in neurites, both axons and dendrites. May be associated with vesicular structures.,subunit:Interacts with calmodulin, in the presence of calcium.,cofactor:Calcium.,domain:The protein kinase domain is predicted to be catalytically inactive.,function:Does not appear to have detectable kinase activity.,similarity:Belongs to the protein kinase superfamily. CAMK Ser/Thr protein kinase family.,similarity:Contains 1 protein kinase domain.,subcellular location:Predominantly observed in association with the plasma membrane of soma and in neurites, both axons and dendrites. May be associated with vesicular structures.,subunit:Interacts with calmodulin, in the presence of calcium.,

Research Area

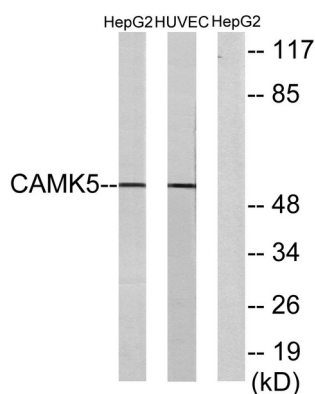
Image Data



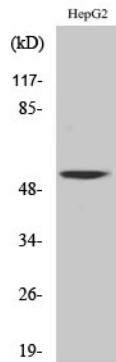
Immunofluorescence analysis of HeLa cells, using CAMK5 Antibody. The picture on the right is blocked with the synthesized peptide.



Immunohistochemistry analysis of paraffin-embedded human brain tissue, using CAMK5 Antibody. The picture on the right is blocked with the synthesized peptide.



Western blot analysis of lysates from HepG2 and HUVEC cells, using CAMK5 Antibody. The lane on the right is blocked with the synthesized peptide.



Western Blot analysis of various cells using CaMKV Polyclonal Antibody