

Product Name: Calpain 2 Rabbit Polyclonal Antibody**Catalog #: APRab07870**

For research use only.

Summary

Description	Rabbit polyclonal Antibody
Host	Rabbit
Application	IHC, ICC/IF, ELISA
Reactivity	Human, Mouse, Rat
Conjugation	Unconjugated
Modification	Unmodified
Isotype	IgG
Clonality	Polyclonal
Form	Liquid
Concentration	1mg/ml
Storage	Aliquot and store at -20°C (valid for 12 months). Avoid freeze/thaw cycles.
Shipping	Ice bags
Buffer	Liquid in PBS containing 50% glycerol, 0.5% protective protein and 0.02% New type preservative N.
Purification	Affinity purification

Application

Dilution Ratio IHC 1:100-1:300, ICC/IF 1:50-1:200, ELISA 1:20000-1:40000

Molecular Weight

Antigen Information

Gene Name	CAPN2 CAPN2; CANPL2; Calpain-2 catalytic subunit; Calcium-activated neutral proteinase 2; CANP
Alternative Names	2; Calpain M-type; Calpain large polypeptide L2; Calpain-2 large subunit; Millimolar-calpain; M-calpain
Gene ID	824.0
SwissProt ID	P17655
Immunogen	The antiserum was produced against synthesized peptide derived from human Calpain 2. AA range:305-354

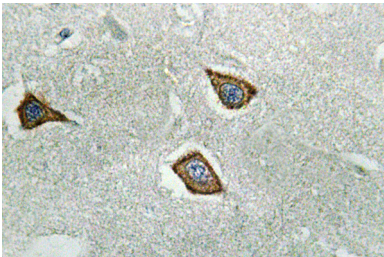
Background

The calpains, calcium-activated neutral proteases, are nonlysosomal, intracellular cysteine proteases. The mammalian calpains include ubiquitous, stomach-specific, and muscle-specific proteins. The ubiquitous enzymes consist of heterodimers with distinct large, catalytic subunits associated with a common small, regulatory subunit. This gene encodes the large subunit of the ubiquitous enzyme, calpain 2. Multiple heterogeneous transcriptional start sites in the 5' UTR have been reported. Two transcript variants encoding different isoforms have been found for this gene. [provided by RefSeq, Mar 2009], catalytic activity: Broad endopeptidase specificity., cofactor: Binds 3 calcium ions., enzyme regulation: Activated by 200-1000 micromolar concentrations of calcium and inhibited by calpastatin., function: Calcium-regulated non-lysosomal thiol-protease which catalyze limited proteolysis of substrates involved in cytoskeletal remodeling and signal transduction., sequence caution: Contaminating sequence. Potential poly-A sequence., similarity: Belongs to the peptidase C2 family., similarity: Contains 1 calpain catalytic domain., similarity: Contains 3 EF-hand domains., subcellular location: Translocates to the plasma membrane upon Ca^{2+} binding., subunit: Forms a heterodimer with a small (regulatory) subunit (CAPNS1), tissue specificity: Ubiquitous.,

Research Area

Apoptosis_Inhibition; Apoptosis_Mitochondrial; Apoptosis_Overview; Focal adhesion; Alzheimer's disease;

Image Data



Immunohistochemistry analysis of Calpain 2 antibody in paraffin-embedded human brain tissue.