

Product Name: CALML5 Rabbit Polyclonal Antibody**Catalog #: APRab07859**

For research use only.

Summary

Description	Rabbit polyclonal Antibody
Host	Rabbit
Application	IHC, ICC/IF, ELISA
Reactivity	Human, Rat, Mouse
Conjugation	Unconjugated
Modification	Unmodified
Isotype	IgG
Clonality	Polyclonal
Form	Liquid
Concentration	1mg/ml
Storage	Aliquot and store at -20°C (valid for 12 months). Avoid freeze/thaw cycles.
Shipping	Ice bags
Buffer	Liquid in PBS containing 50% glycerol, 0.5% protective protein and 0.02% New type preservative N.
Purification	Affinity purification

Application

Dilution Ratio IHC 1:100-1:300, ICC/IF 1:50-1:200, ELISA 1:5000-1:20000

Molecular Weight

Antigen Information

Gene Name	CALML5
Alternative Names	CALML5; CLSP; Calmodulin-like protein 5; Calmodulin-like skin protein
Gene ID	51806.0
SwissProt ID	Q9NZT1
Immunogen	The antiserum was produced against synthesized peptide derived from human CALML5. AA range:96-146

Background

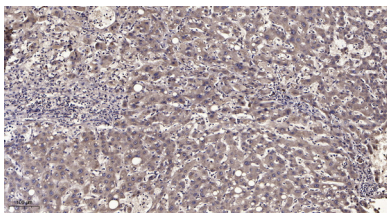
This gene encodes a novel calcium binding protein expressed in the epidermis and related to the calmodulin family of calcium

binding proteins. Functional studies with recombinant protein demonstrate it does bind calcium and undergoes a conformational change when it does so. Abundant expression is detected only in reconstructed epidermis and is restricted to differentiating keratinocytes. In addition, it can associate with transglutaminase 3, shown to be a key enzyme in the terminal differentiation of keratinocytes. [provided by RefSeq, Jul 2008],function: Binds calcium. May be involved in terminal differentiation of keratinocytes.,similarity: Contains 4 EF-hand domains.,subunit: Associates with transglutaminase 3.,tissue specificity: Particularly abundant in the epidermis where its expression is directly related to keratinocyte differentiation. Very low expression in lung.,

Research Area

Calcium;Phosphatidylinositol signaling system;Oocyte meiosis;Vascular smooth muscle contraction;Long-term potentiation;Neurotrophin;Olfactory transduction;Insulin_Receptor;GnRH;Melanogenesis;Alzheimer's disease;Glioma;

Image Data



Immunohistochemical analysis of paraffin-embedded human liver cancer. 1, Antibody was diluted at 1:200 (4° overnight) . 2, Tris-EDTA,pH9.0 was used for antigen retrieval. 3,Secondary antibody was diluted at 1:200 (room temperature, 45min) .