

Product Name: CALL3 Rabbit Polyclonal Antibody**Catalog #: APRab07857**

For research use only.

Summary

Description	Rabbit polyclonal Antibody
Host	Rabbit
Application	WB,ELISA
Reactivity	Human,Mouse,Rat
Conjugation	Unconjugated
Modification	Unmodified
Isotype	IgG
Clonality	Polyclonal
Form	Liquid
Concentration	1mg/ml
Storage	Aliquot and store at -20°C (valid for 12 months). Avoid freeze/thaw cycles.
Shipping	Ice bags
Buffer	Liquid in PBS containing 50% glycerol, and 0.02% New type preservative N.
Purification	Affinity purification

Application

Dilution Ratio	WB 1:500-1:2000,ELISA 1:5000-1:20000
Molecular Weight	16kDa

Antigen Information

Gene Name	CALML3
Alternative Names	
Gene ID	810.0
SwissProt ID	P27482
Immunogen	Synthesized peptide derived from part region of human protein

Background

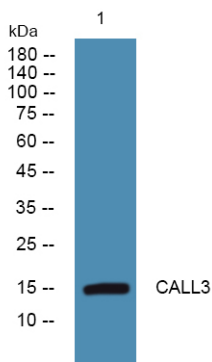
function:May be similar to that of authentic calmodulin and may actually compete with calmodulin by binding, with different affinities, to cellular substrates.,induction:By human beta type transforming growth factor.,miscellaneous:Binds four calcium ions.,similarity:Belongs to the calmodulin family.,similarity:Contains 4 EF-hand domains.,tissue specificity:Expressed in normal

mammary, prostate, cervical, and epidermal tissues. It is greatly reduced or undetectable in transformed cells.,function:May be similar to that of authentic calmodulin and may actually compete with calmodulin by binding, with different affinities, to cellular substrates.,induction:By human beta type transforming growth factor.,miscellaneous:Binds four calcium ions.,similarity:Belongs to the calmodulin family.,similarity:Contains 4 EF-hand domains.,tissue specificity:Expressed in normal mammary, prostate, cervical, and epidermal tissues. It is greatly reduced or undetectable in transformed cells.,

Research Area

Calcium;Phosphatidylinositol signaling system;Oocyte meiosis;Vascular smooth muscle contraction;Long-term potentiation;Neurotrophin;Olfactory transduction;Insulin_Receptor;GnRH;Melanogenesis;Alzheimer's disease;Glioma;

Image Data



Western blot analysis of lysates from PC12 cells, CALL3 Rabbit Polyclonal Antibody was diluted at 1:1000, 4°over night