

---

**Product Name: CAGE-1 Rabbit Polyclonal Antibody****Catalog #: APRab07840**

For research use only.

**Summary**

<b>Description</b>	Rabbit polyclonal Antibody
<b>Host</b>	Rabbit
<b>Application</b>	WB,IHC,ICC/IF,ELISA
<b>Reactivity</b>	Human,Rat,Mouse
<b>Conjugation</b>	Unconjugated
<b>Modification</b>	Unmodified
<b>Isotype</b>	IgG
<b>Clonality</b>	Polyclonal
<b>Form</b>	Liquid
<b>Concentration</b>	1mg/ml
<b>Storage</b>	Aliquot and store at -20°C (valid for 12 months). Avoid freeze/thaw cycles.
<b>Shipping</b>	Ice bags
<b>Buffer</b>	Liquid in PBS containing 50% glycerol, 0.5% protective protein and 0.02% New type preservative N.
<b>Purification</b>	Affinity purification

**Application**

<b>Dilution Ratio</b>	WB 1:500-1:2000,IHC 1:100-1:300,ICC/IF 1:50-1:200,ELISA 1:20000-1:40000
<b>Molecular Weight</b>	90kDa

**Antigen Information**

<b>Gene Name</b>	CAGE1
<b>Alternative Names</b>	CAGE1; CTAG3; Cancer-associated gene 1 protein; CAGE-1; Cancer/testis antigen 3; CT3
<b>Gene ID</b>	285782.0
<b>SwissProt ID</b>	Q8TC20
<b>Immunogen</b>	The antiserum was produced against synthesized peptide derived from human CAGE1. AA range:711-760

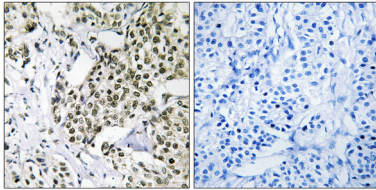
**Background**

tissue specificity:Testis-specific expression in normal tissues, but wide expression among cancer tissues and cell lines.,tissue

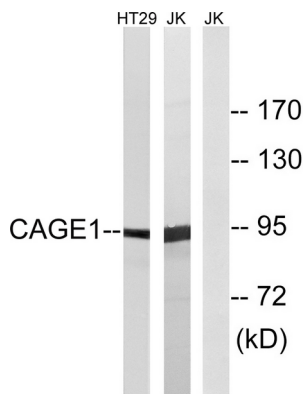
specificity: Testis-specific expression in normal tissues, but wide expression among cancer tissues and cell lines,

## Research Area

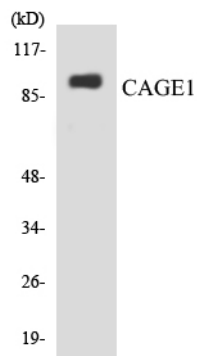
## Image Data



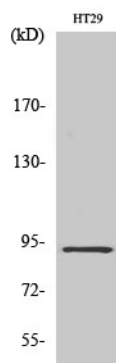
Immunohistochemistry analysis of paraffin-embedded human breast carcinoma tissue, using CAGE1 Antibody. The picture on the right is blocked with the synthesized peptide.



Western blot analysis of lysates from HT-29 and Jurkat cells, using CAGE1 Antibody. The lane on the right is blocked with the synthesized peptide.



Western blot analysis of the lysates from HepG2 cells using CAGE1 antibody.



Western Blot analysis of various cells using CAGE-1 Polyclonal Antibody diluted at 1 : 2000

