
Product Name: Cadherin-24 Rabbit Polyclonal Antibody**Catalog #: APRab07833**

For research use only.

Summary

Description	Rabbit polyclonal Antibody
Host	Rabbit
Application	WB,ICC/IF,ELISA
Reactivity	Human,Mouse
Conjugation	Unconjugated
Modification	Unmodified
Isotype	IgG
Clonality	Polyclonal
Form	Liquid
Concentration	1mg/ml
Storage	Aliquot and store at -20°C (valid for 12 months). Avoid freeze/thaw cycles.
Shipping	Ice bags
Buffer	Liquid in PBS containing 50% glycerol, 0.5% protective protein and 0.02% New type preservative N.
Purification	Affinity purification

Application

Dilution Ratio WB 1:500-1:2000,ICC/IF 1:200-1:1000,ELISA 1:5000-1:20000

Molecular Weight

Antigen Information

Gene Name	CDH24
Alternative Names	CDH24; CDH11L; Cadherin-24
Gene ID	64403.0
SwissProt ID	Q86UP0
Immunogen	The antiserum was produced against synthesized peptide derived from human CDH24. AA range:81-130

Background

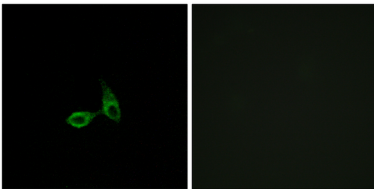
function:Cadherins are calcium dependent cell adhesion proteins.,function:Cadherins are calcium dependent cell adhesion

proteins. They preferentially interact with themselves in a homophilic manner in connecting cells; cadherins may thus contribute to the sorting of heterogeneous cell types. Cadherin-24 mediate strong cell-cell adhesion.,similarity:Contains 5 cadherin domains.,subunit:Associates with alpha-, beta- and delta-catenins.,function:Cadherins are calcium dependent cell adhesion proteins.,function:Cadherins are calcium dependent cell adhesion proteins. They preferentially interact with themselves in a homophilic manner in connecting cells; cadherins may thus contribute to the sorting of heterogeneous cell types. Cadherin-24 mediate strong cell-cell adhesion.,similarity:Contains 5 cadherin domains.,subunit:Associates with alpha-, beta- and delta-catenins.,

Research Area

Adherens_Junction

Image Data



Immunofluorescence analysis of HepG2 cells, using CDH24 Antibody. The picture on the right is blocked with the synthesized peptide.