
Product Name: Cadherin-20 Rabbit Polyclonal Antibody**Catalog #: APRab07830**

For research use only.

Summary

Description	Rabbit polyclonal Antibody
Host	Rabbit
Application	IHC,ICC/IF,ELISA
Reactivity	Human,Mouse,Rat
Conjugation	Unconjugated
Modification	Unmodified
Isotype	IgG
Clonality	Polyclonal
Form	Liquid
Concentration	1mg/ml
Storage	Aliquot and store at -20°C (valid for 12 months). Avoid freeze/thaw cycles.
Shipping	Ice bags
Buffer	Liquid in PBS containing 50% glycerol, 0.5% protective protein and 0.02% New type preservative N.
Purification	Affinity purification

Application

Dilution Ratio IHC 1:100-1:300,ICC/IF 1:200-1:1000,ELISA 1:5000-1:20000

Molecular Weight

Antigen Information

Gene Name	CDH20
Alternative Names	CDH20; CDH7L3; Cadherin-20
Gene ID	28316.0
SwissProt ID	Q9HBT6
Immunogen	The antiserum was produced against synthesized peptide derived from human CDH20. AA range:111-160

Background

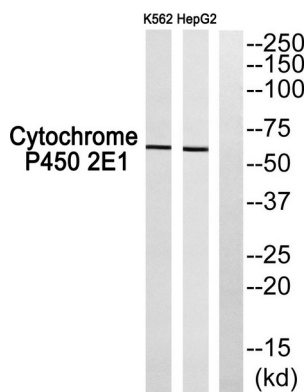
This gene is a type II classical cadherin from the cadherin superfamily and one of three cadherin 7-like genes located in a cluster

on chromosome 18. The encoded membrane protein is a calcium dependent cell-cell adhesion glycoprotein comprised of five extracellular cadherin repeats, a transmembrane region and a highly conserved cytoplasmic tail. Type II (atypical) cadherins are defined based on their lack of a HAV cell adhesion recognition sequence specific to type I cadherins. Since disturbance of intracellular adhesion is a prerequisite for invasion and metastasis of tumor cells, cadherins are considered prime candidates for tumor suppressor genes. [provided by RefSeq, Jul 2008],function:Cadherins are calcium dependent cell adhesion proteins.,function:Cadherins are calcium dependent cell adhesion proteins. They preferentially interact with themselves in a homophilic manner in connecting cells; cadherins may thus contribute to the sorting of heterogeneous cell types.,similarity:Contains 5 cadherin domains.,tissue specificity:Expressed in placenta, adult brain, and fetal brain.,

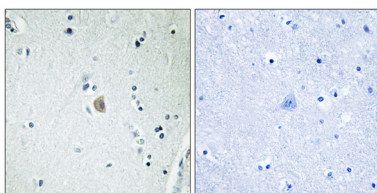
Research Area

Adherens_Junction

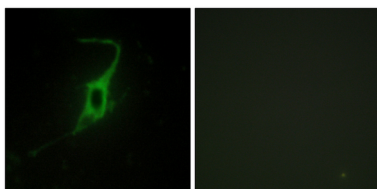
Image Data



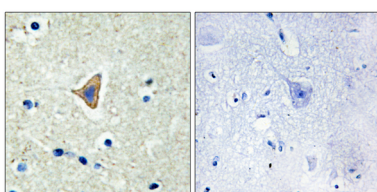
Western blot analysis of CDH20 Antibody. The lane on the right is blocked with the CDH20 peptide.



Immunohistochemistry analysis of paraffin-embedded human brain, using CDH20 Antibody. The lane on the right is blocked with the CDH20 peptide.



Immunofluorescence analysis of NIH/3T3 cells, using CDH20 Antibody. The picture on the right is blocked with the synthesized peptide.



Immunohistochemistry analysis of paraffin-embedded human brain tissue, using CDH20 Antibody. The picture on the right is blocked with the synthesized peptide.