
Product Name: Cadherin-19 Rabbit Polyclonal Antibody**Catalog #: APRab07829**

For research use only.

Summary

Description	Rabbit polyclonal Antibody
Host	Rabbit
Application	WB,IHC,ICC/IF,ELISA
Reactivity	Human,Rat,Mouse
Conjugation	Unconjugated
Modification	Unmodified
Isotype	IgG
Clonality	Polyclonal
Form	Liquid
Concentration	1mg/ml
Storage	Aliquot and store at -20°C (valid for 12 months). Avoid freeze/thaw cycles.
Shipping	Ice bags
Buffer	Liquid in PBS containing 50% glycerol, 0.5% protective protein and 0.02% New type preservative N.
Purification	Affinity purification

Application

Dilution Ratio	WB 1:500-1:2000,IHC 1:100-1:300,ICC/IF 1:200-1:1000,ELISA 1:10000-1:20000
Molecular Weight	87kDa

Antigen Information

Gene Name	CDH19
Alternative Names	CDH19; CDH7L2; Cadherin-19
Gene ID	28513.0
SwissProt ID	Q9H159
Immunogen	The antiserum was produced against synthesized peptide derived from human CDH19. AA range:371-420

Background

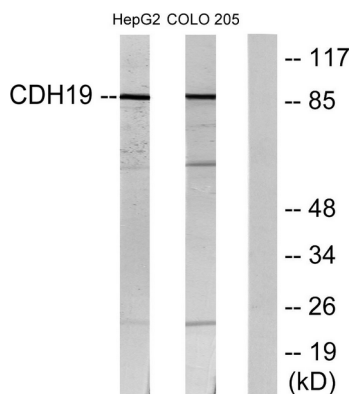
This gene is one of three related type II cadherin genes situated in a cluster on chromosome 18. The encoded protein is a

calcium dependent cell-cell adhesion glycoprotein containing five extracellular cadherin repeats. Loss of cadherins may be associated with cancer formation. Alternative splicing results in multiple transcript variants for this gene. [provided by RefSeq, Aug 2012],function:Cadherins are calcium dependent cell adhesion proteins. They preferentially interact with themselves in a homophilic manner in connecting cells; cadherins may thus contribute to the sorting of heterogeneous cell types.,similarity:Contains 5 cadherin domains.,tissue specificity:Expressed in many tissues, with the exception of uterus.,

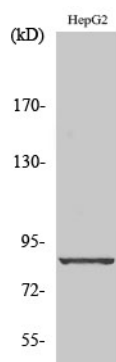
Research Area

Adherens_Junction

Image Data



Western blot analysis of lysates from HepG2 and COLO205 cells, using CDH19 Antibody. The lane on the right is blocked with the synthesized peptide.



Western Blot analysis of various cells using Cadherin-19 Polyclonal Antibody diluted at 1: 1000