
Product Name: Cadherin-16 Rabbit Polyclonal Antibody**Catalog #: APRab07827**

For research use only.

Summary

Description	Rabbit polyclonal Antibody
Host	Rabbit
Application	WB,IHC,ICC/IF,ELISA
Reactivity	Human,Rat,Mouse
Conjugation	Unconjugated
Modification	Unmodified
Isotype	IgG
Clonality	Polyclonal
Form	Liquid
Concentration	1mg/ml
Storage	Aliquot and store at -20°C (valid for 12 months). Avoid freeze/thaw cycles.
Shipping	Ice bags
Buffer	Liquid in PBS containing 50% glycerol, 0.5% protective protein and 0.02% New type preservative N.
Purification	Affinity purification

Application

Dilution Ratio	WB 1:500-1:2000,IHC 1:100-1:300,ICC/IF 1:200-1:1000,ELISA 1:5000-1:20000
Molecular Weight	90kDa

Antigen Information

Gene Name	CDH16
Alternative Names	CDH16; Cadherin-16; Kidney-specific cadherin; Ksp-cadherin
Gene ID	1014.0
SwissProt ID	O75309
Immunogen	The antiserum was produced against synthesized peptide derived from human CDH16. AA range:780-829

Background

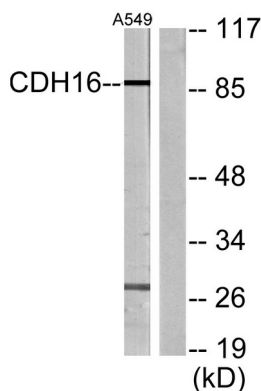
This gene is a member of the cadherin superfamily, genes encoding calcium-dependent, membrane-associated glycoproteins.

Mapped to a previously identified cluster of cadherin genes on chromosome 16q22.1, the gene localizes with superfamily members CDH1, CDH3, CDH5, CDH8 and CDH11. The protein consists of an extracellular domain containing 6 cadherin domains, a transmembrane region and a truncated cytoplasmic domain but lacks the prosequence and tripeptide HAV adhesion recognition sequence typical of most classical cadherins. Expression is exclusively in kidney, where the protein functions as the principal mediator of homotypic cellular recognition, playing a role in the morphogenic direction of tissue development. Alternatively spliced transcript variants encoding distinct isoforms have been identified. [provided by RefSeq, Mar 2011],function:Cadherins are calcium dependent cell adhesion proteins. They preferentially interact with themselves in a homophilic manner in connecting cells; cadherins may thus contribute to the sorting of heterogeneous cell types.,similarity:Contains 6 cadherin domains.,tissue specificity:Kidney specific.,

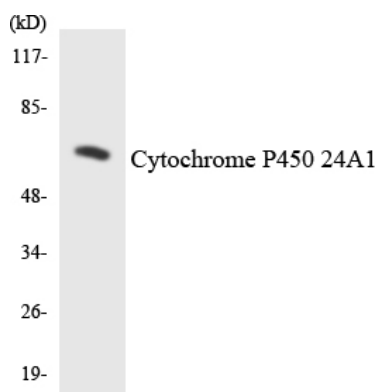
Research Area

Adherens_Junction

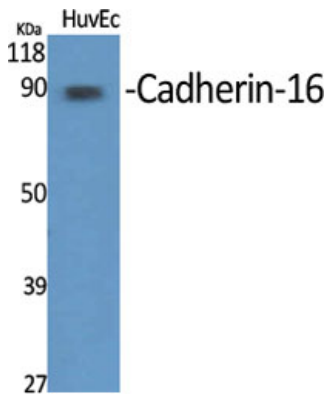
Image Data



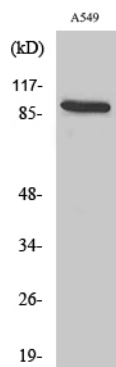
Western blot analysis of lysates from A549 cells, using CDH16 Antibody. The lane on the right is blocked with the synthesized peptide.



Western blot analysis of the lysates from HepG2 cells using Cytochrome P450 24A1 antibody.



Western Blot analysis of various cells using Cadherin-16 Polyclonal Antibody diluted at 1: 1000



Western Blot analysis of A549 cells using Cadherin-16 Polyclonal Antibody diluted at 1: 1000