

Product Name: CA XIII Rabbit Polyclonal Antibody**Catalog #: APRab07775**

For research use only.

Summary

Description	Rabbit polyclonal Antibody
Host	Rabbit
Application	WB,ELISA
Reactivity	Human,Mouse
Conjugation	Unconjugated
Modification	Unmodified
Isotype	IgG
Clonality	Polyclonal
Form	Liquid
Concentration	1mg/ml
Storage	Aliquot and store at -20°C (valid for 12 months). Avoid freeze/thaw cycles.
Shipping	Ice bags
Buffer	Liquid in PBS containing 50% glycerol, 0.5% protective protein and 0.02% New type preservative N.
Purification	Affinity purification

Application

Dilution Ratio	WB 1:500-1:2000,ELISA 1:5000-1:20000
Molecular Weight	35kDa

Antigen Information

Gene Name	CA13
Alternative Names	CA13; Carbonic anhydrase 13; Carbonate dehydratase XIII; Carbonic anhydrase XIII; CA-XIII
Gene ID	377677.0
SwissProt ID	Q8N1Q1
Immunogen	The antiserum was produced against synthesized peptide derived from human CA13. AA range:141-190

Background

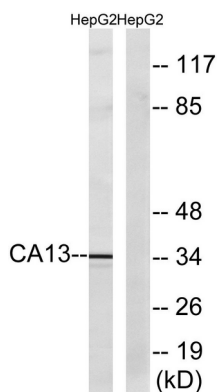
Carbonic anhydrases (CAs) are a family of zinc metalloenzymes. For background information on the CA family, see MIM 114800.

[supplied by OMIM, Mar 2008],catalytic activity: $\text{H}_2\text{CO}_3 = \text{CO}_2 + \text{H}_2\text{O}$.,cofactor:Zinc.,function:Reversible hydration of carbon dioxide.,similarity:Belongs to the alpha-carbonic anhydrase family.,tissue specificity:Expressed in thymus, small intestine, spleen, prostate, ovary, colon and testis.,

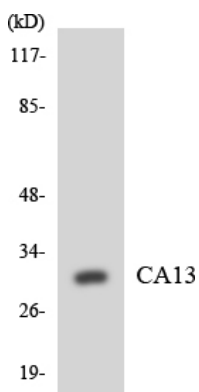
Research Area

Nitrogen metabolism;

Image Data



Western blot analysis of lysates from HepG2 cells, using CA13 Antibody. The lane on the right is blocked with the synthesized peptide.



Western blot analysis of the lysates from K562 cells using CA13 antibody.



Western Blot analysis of various cells using CA XIII Polyclonal Antibody