

**Product Name: CA VI Rabbit Polyclonal Antibody****Catalog #: APRab07772**

For research use only.

**Summary**

<b>Description</b>	Rabbit polyclonal Antibody
<b>Host</b>	Rabbit
<b>Application</b>	WB,ELISA
<b>Reactivity</b>	Human
<b>Conjugation</b>	Unconjugated
<b>Modification</b>	Unmodified
<b>Isotype</b>	IgG
<b>Clonality</b>	Polyclonal
<b>Form</b>	Liquid
<b>Concentration</b>	1mg/ml
<b>Storage</b>	Aliquot and store at -20°C (valid for 12 months). Avoid freeze/thaw cycles.
<b>Shipping</b>	Ice bags
<b>Buffer</b>	Liquid in PBS containing 50% glycerol, 0.5% protective protein and 0.02% New type preservative N.
<b>Purification</b>	Affinity purification

**Application**

<b>Dilution Ratio</b>	WB 1:500-1:2000,ELISA 1:10000-1:20000
<b>Molecular Weight</b>	35kDa

**Antigen Information**

<b>Gene Name</b>	CA6
<b>Alternative Names</b>	CA6; Carbonic anhydrase 6; Carbonate dehydratase VI; Carbonic anhydrase VI; CA-VI; Salivary carbonic anhydrase; Secreted carbonic anhydrase
<b>Gene ID</b>	765.0
<b>SwissProt ID</b>	P23280
<b>Immunogen</b>	The antiserum was produced against synthesized peptide derived from human CA6. AA range:231-280

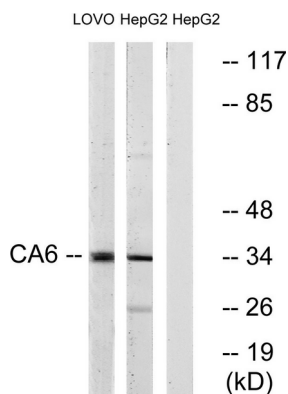
**Background**

The protein encoded by this gene is one of several isozymes of carbonic anhydrase. This protein is found only in salivary glands and saliva and protein may play a role in the reversible hydration of carbon dioxide though its function in saliva is unknown. [provided by RefSeq, Jul 2008], catalytic activity:  $\text{H}_2\text{CO}_3 = \text{CO}_2 + \text{H}_2\text{O}$ , cofactor: Zinc, function: Reversible hydration of carbon dioxide. Its role in saliva is unknown, similarity: Belongs to the alpha-carbonic anhydrase family, tissue specificity: Major constituent of saliva,

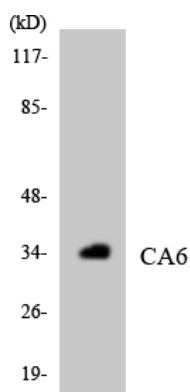
## Research Area

Nitrogen metabolism;

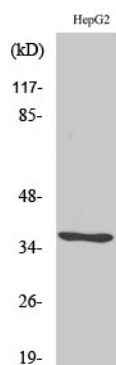
## Image Data



Western blot analysis of lysates from HepG2, and LOVO cells, using CA6 Antibody. The lane on the right is blocked with the synthesized peptide.



Western blot analysis of the lysates from HepG2 cells using CA6 antibody.



Western Blot analysis of various cells using CA VI Polyclonal Antibody