

Product Name: CA VA Rabbit Polyclonal Antibody**Catalog #: APRab07770**

For research use only.

Summary

| | |
|----------------------|---|
| Description | Rabbit polyclonal Antibody |
| Host | Rabbit |
| Application | WB,ELISA |
| Reactivity | Human |
| Conjugation | Unconjugated |
| Modification | Unmodified |
| Isotype | IgG |
| Clonality | Polyclonal |
| Form | Liquid |
| Concentration | 1mg/ml |
| Storage | Aliquot and store at -20°C (valid for 12 months). Avoid freeze/thaw cycles. |
| Shipping | Ice bags |
| Buffer | Liquid in PBS containing 50% glycerol, 0.5% protective protein and 0.02% New type preservative N. |
| Purification | Affinity purification |

Application

| | |
|-------------------------|---------------------------------------|
| Dilution Ratio | WB 1:500-1:2000,ELISA 1:20000-1:40000 |
| Molecular Weight | 35kDa |

Antigen Information

| | |
|--------------------------|---|
| Gene Name | CA5A |
| Alternative Names | CA5A; CA5; Carbonic anhydrase 5A; mitochondrial; Carbonate dehydratase VA; Carbonic anhydrase VA; CA-VA |
| Gene ID | 763.0 |
| SwissProt ID | P35218 |
| Immunogen | The antiserum was produced against synthesized peptide derived from human CA5A. AA range:171-220 |

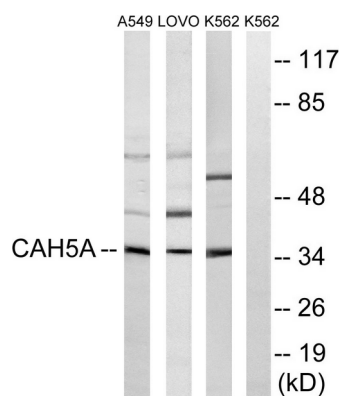
Background

Carbonic anhydrases (CAs) are a large family of zinc metalloenzymes that catalyze the reversible hydration of carbon dioxide. They participate in a variety of biological processes, including respiration, calcification, acid-base balance, bone resorption, and the formation of aqueous humor, cerebrospinal fluid, saliva, and gastric acid. They show extensive diversity in tissue distribution and in their subcellular localization. CA VA is localized in the mitochondria and expressed primarily in the liver. It may play an important role in ureagenesis and gluconeogenesis. CA5A gene maps to chromosome 16q24.3 and an unprocessed pseudogene has been assigned to 16p12-p11.2. [provided by RefSeq, Jul 2008], catalytic activity: $\text{H}_2\text{CO}_3 = \text{CO}_2 + \text{H}_2\text{O}$, cofactor: Zinc, function: Reversible hydration of carbon dioxide, similarity: Belongs to the alpha-carbonic anhydrase family.

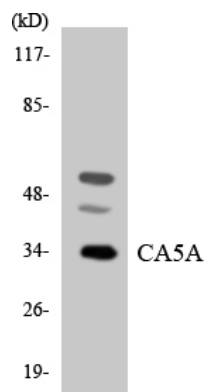
Research Area

Nitrogen metabolism;

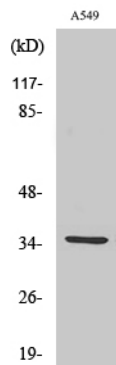
Image Data



Western blot analysis of lysates from A549, LOVO, and K562 cells, using CA5A Antibody. The lane on the right is blocked with the synthesized peptide.



Western blot analysis of the lysates from K562 cells using CA5A antibody.



Western Blot analysis of various cells using CA VA Polyclonal Antibody