
Product Name: C8 β Rabbit Polyclonal Antibody**Catalog #: APRab07758**

For research use only.

Summary

Description	Rabbit polyclonal Antibody
Host	Rabbit
Application	WB,ELISA
Reactivity	Human,Rat
Conjugation	Unconjugated
Modification	Unmodified
Isotype	IgG
Clonality	Polyclonal
Form	Liquid
Concentration	1mg/ml
Storage	Aliquot and store at -20°C (valid for 12 months). Avoid freeze/thaw cycles.
Shipping	Ice bags
Buffer	Liquid in PBS containing 50% glycerol, 0.5% protective protein and 0.02% New type preservative N.
Purification	Affinity purification

Application

Dilution Ratio	WB 1:500-1:2000,ELISA 1:10000-1:20000
Molecular Weight	70kDa

Antigen Information

Gene Name	C8B
Alternative Names	Complement component C8 beta chain (Complement component 8 subunit beta)
Gene ID	732.0
SwissProt ID	P07358
Immunogen	The antiserum was produced against synthesized peptide derived from the Internal region of human C8B. AA range:371-420

Background

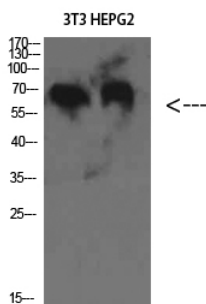
This gene encodes one of the three subunits of the complement component 8 (C8) protein. C8 is composed of equimolar

amounts of alpha, beta and gamma subunits, which are encoded by three separate genes. C8 is one component of the membrane attack complex, which mediates cell lysis, and it initiates membrane penetration of the complex. This protein mediates the interaction of C8 with the C5b-7 membrane attack complex precursor. In humans deficiency of this protein is associated with increased risk of meningococcal infections. Alternative splicing results in multiple transcript variants. [provided by RefSeq, Jun 2013],disease:Defects in C8B are a cause of complement C8 deficiency type II [MIM:120960]. Patients with deficiency of C8 suffer from recurrent bacterial infections, predominantly from Neisseria meningitidis.,function:C8 is a constituent of the membrane attack complex. C8 binds to the C5b-7 complex, forming the C5b-8 complex. C5-b8 binds C9 and acts as a catalyst in the polymerization of C9.,online information:C8B mutation db,polymorphism:The sequence shown is that of allotype C8B B.,PTM:N-glycosylated; contains one or two bound glycans. Not O-glycosylated.,similarity:Belongs to the complement C6/C7/C8/C9 family.,similarity:Contains 1 EGF-like domain.,similarity:Contains 1 LDL-receptor class A domain.,similarity:Contains 1 MACPF domain.,similarity:Contains 2 TSP type-1 domains.,subunit:C8 is composed of three chains: alpha, beta and gamma. The beta chain binds to the C8 alpha chain and to the C5b-C7 complex, presumably to C5b. It is essential to the incorporation of C8 into the C5b-C8 complex.,

Research Area

Complement and coagulation cascades;Prion diseases;Systemic lupus erythematosus;

Image Data



Western Blot analysis of 3T3 HEPG2 cells using C8 β Polyclonal Antibody diluted at 1:2000. Secondary antibody was diluted at 1:20000