
Product Name: C27C1 Rabbit Polyclonal Antibody**Catalog #: APRab07738**

For research use only.

Summary

Description	Rabbit polyclonal Antibody
Host	Rabbit
Application	WB,ELISA
Reactivity	Human,Rat,Mouse
Conjugation	Unconjugated
Modification	Unmodified
Isotype	IgG
Clonality	Polyclonal
Form	Liquid
Concentration	1mg/ml
Storage	Aliquot and store at -20°C (valid for 12 months). Avoid freeze/thaw cycles.
Shipping	Ice bags
Buffer	Liquid in PBS containing 50% glycerol, and 0.02% New type preservative N.
Purification	Affinity purification

Application

Dilution Ratio	WB 1:500-1:2000,ELISA 1:5000-1:20000
Molecular Weight	40kDa

Antigen Information

Gene Name	CYP27C1
Alternative Names	
Gene ID	339761.0
SwissProt ID	Q4G0S4
Immunogen	Synthesized peptide derived from human protein . at AA range: 80-160

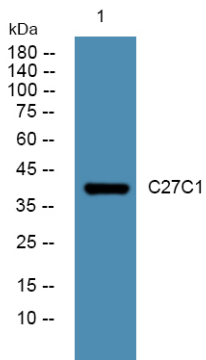
Background

cytochrome P450 family 27 subfamily C member 1(CYP27C1) Homo sapiens This gene encodes a member of the cytochrome P450 superfamily of enzymes. The cytochrome P450 proteins are monooxygenases which catalyze many reactions involved in drug metabolism and synthesis of cholesterol, steroids and other lipids. [provided by RefSeq, Jul 2008],cofactor:Heme

group.,similarity:Belongs to the cytochrome P450 family.,

Research Area

Image Data



Western blot analysis of lysates from K562 cells, C27C1 Rabbit Polyclonal Antibody was diluted at 1:1000, 4° over night