

Product Name: C1s Rabbit Polyclonal Antibody**Catalog #: APRab07735**

For research use only.

Summary

Description	Rabbit polyclonal Antibody
Host	Rabbit
Application	WB,IHC,ICC/IF,ELISA
Reactivity	Human,Rat,Mouse
Conjugation	Unconjugated
Modification	Unmodified
Isotype	IgG
Clonality	Polyclonal
Form	Liquid
Concentration	1mg/ml
Storage	Aliquot and store at -20°C (valid for 12 months). Avoid freeze/thaw cycles.
Shipping	Ice bags
Buffer	Liquid in PBS containing 50% glycerol, 0.5% protective protein and 0.02% New type preservative N.
Purification	Affinity purification

Application

Dilution Ratio	WB 1:500-1:2000,IHC 1:100-1:300,ICC/IF 1:50-1:200,ELISA 1:20000-1:40000
Molecular Weight	77kDa

Antigen Information

Gene Name	C1S
Alternative Names	C1S; Complement C1s subcomponent; C1 esterase; Complement component 1 subcomponent s
Gene ID	716.0
SwissProt ID	P09871
Immunogen	The antiserum was produced against synthesized peptide derived from human C1S. AA range:541-590

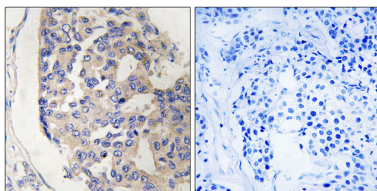
Background

This gene encodes a serine protease, which is a major constituent of the human complement subcomponent C1. C1s associates with two other complement components C1r and C1q in order to yield the first component of the serum complement system. Defects in this gene are the cause of selective C1s deficiency. [provided by RefSeq, Mar 2009],catalytic activity: Cleavage of Arg-|-Ala bond in complement component C4 to form C4a and C4b, and Lys(or Arg)-|-Lys bond in complement component C2 to form C2a and C2b: the 'classical' pathway C3 convertase.,disease: Defects in C1S are the cause of selective C1s deficiency [MIM:120580]; that is associated with early onset multiple autoimmune diseases.,enzyme regulation: Inhibited by SERPING1.,function: C1s B chain is a serine protease that combines with C1q and C1r to form C1, the first component of the classical pathway of the complement system. C1r activates C1s so that it can, in turn, activate C2 and C4.,online information: C1S mutation db,PTM: The iron and 2-oxoglutarate dependent 3-hydroxylation of aspartate and asparagine is (R) stereospecific within EGF domains.,similarity: Belongs to the peptidase S1 family.,similarity: Contains 1 EGF-like domain.,similarity: Contains 1 peptidase S1 domain.,similarity: Contains 2 CUB domains.,similarity: Contains 2 Sushi (CCP/SCR) domains.,subunit: C1 is a calcium-dependent trimolecular complex of C1q, C1r and C1s in the molar ratio of 1:2:2. Activated C1s is an disulfide-linked heterodimer of a heavy chain and a light chain.,

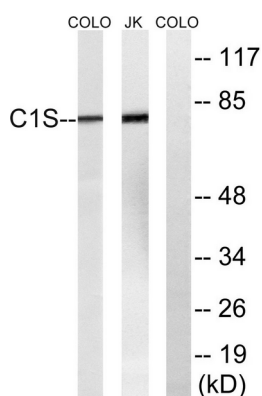
Research Area

Complement and coagulation cascades; Systemic lupus erythematosus;

Image Data



Immunohistochemistry analysis of paraffin-embedded human breast carcinoma tissue, using C1S Antibody. The picture on the right is blocked with the synthesized peptide.



Western blot analysis of lysates from Jurkat and COLO cells, using C1S Antibody. The lane on the right is blocked with the synthesized peptide.