

**Product Name: C1QBP Rabbit Polyclonal Antibody****Catalog #: APRab07724**

For research use only.

**Summary**

<b>Description</b>	Rabbit polyclonal Antibody
<b>Host</b>	Rabbit
<b>Application</b>	WB,IHC,ICC/IF,ELISA
<b>Reactivity</b>	Human,Mouse,Rat
<b>Conjugation</b>	Unconjugated
<b>Modification</b>	Unmodified
<b>Isotype</b>	IgG
<b>Clonality</b>	Polyclonal
<b>Form</b>	Liquid
<b>Concentration</b>	1mg/ml
<b>Storage</b>	Aliquot and store at -20°C (valid for 12 months). Avoid freeze/thaw cycles.
<b>Shipping</b>	Ice bags
<b>Buffer</b>	Liquid in PBS containing 50% glycerol, 0.5% protective protein and 0.02% New type preservative N.
<b>Purification</b>	Affinity purification

**Application**

<b>Dilution Ratio</b>	WB 1:500-1:2000,IHC 1:100-1:300,ICC/IF 1:50-1:200,ELISA 1:20000-1:40000
<b>Molecular Weight</b>	32kDa

**Antigen Information**

<b>Gene Name</b>	C1QBP C1QBP; GC1QBP; HABP1; SF2P32; Complement component 1 Q subcomponent-binding
<b>Alternative Names</b>	protein; mitochondrial; GC1q-R protein; Glycoprotein gC1qBP; C1qBP; Hyaluronan-binding protein 1; Mitochondrial matrix protein p32; p33
<b>Gene ID</b>	708.0
<b>SwissProt ID</b>	Q07021
<b>Immunogen</b>	The antiserum was produced against synthesized peptide derived from human C1QBP. AA range:61-110

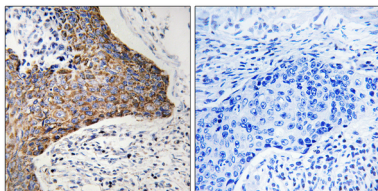
## Background

The human complement subcomponent C1q associates with C1r and C1s in order to yield the first component of the serum complement system. The protein encoded by this gene is known to bind to the globular heads of C1q molecules and inhibit C1 activation. This protein has also been identified as the p32 subunit of pre-mRNA splicing factor SF2, as well as a hyaluronic acid-binding protein. [provided by RefSeq, Jul 2008],caution:Was originally (PubMed:1830244 and PubMed:8262387) thought to be a pre-mRNA splicing factor SF2 p32 subunit and to play a role in preventing exon skipping, ensuring the accuracy of splicing and regulating alternative splicing.,function:Not known. Binds to the globular "heads" of C1Q thus inhibiting C1 activation.,similarity:Belongs to the MAM33 family.,subunit:Interacts with Rubella virus capsid protein.,

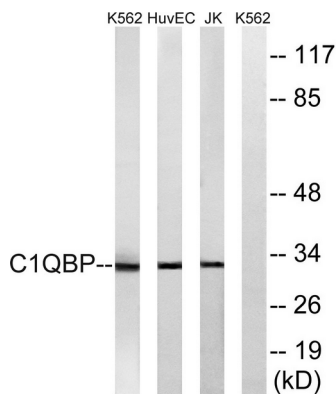
## Research Area

Epigenetics and Nuclear Signaling

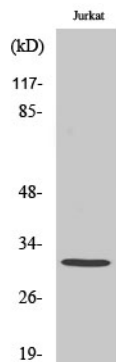
## Image Data



Immunohistochemistry analysis of paraffin-embedded human tonsil tissue, using C1QBP Antibody. The picture on the right is blocked with the synthesized peptide.



Western blot analysis of lysates from Jurkat, HUVEC, and K562 cells, using C1QBP Antibody. The lane on the right is blocked with the synthesized peptide.



Western Blot analysis of various cells using C1QBP Polyclonal Antibody diluted at 1 : 1000