

Product Name: C16orf44 Rabbit Polyclonal Antibody**Catalog #: APRab07714**

For research use only.

Summary

| | |
|----------------------|---|
| Description | Rabbit polyclonal Antibody |
| Host | Rabbit |
| Application | IHC, ICC/IF, ELISA |
| Reactivity | Human, Rat, Mouse |
| Conjugation | Unconjugated |
| Modification | Unmodified |
| Isotype | IgG |
| Clonality | Polyclonal |
| Form | Liquid |
| Concentration | 1mg/ml |
| Storage | Aliquot and store at -20°C (valid for 12 months). Avoid freeze/thaw cycles. |
| Shipping | Ice bags |
| Buffer | Liquid in PBS containing 50% glycerol, 0.5% protective protein and 0.02% New type preservative N. |
| Purification | Affinity purification |

Application

Dilution Ratio IHC 1:100-1:300, ICC/IF 1:50-1:200, ELISA 1:20000-1:40000

Molecular Weight

Antigen Information

| | |
|--------------------------|--|
| Gene Name | KLHL36 |
| Alternative Names | KLHL36; C16orf44; Kelch-like protein 36 |
| Gene ID | 79786.0 |
| SwissProt ID | Q8N4N3 |
| Immunogen | The antiserum was produced against synthesized peptide derived from human C16orf44. AA range:567-616 |

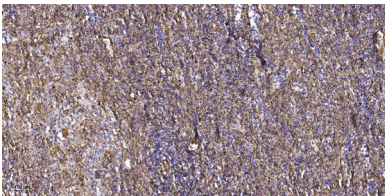
Background

function: Probable substrate-specific adapter of an E3 ubiquitin-protein ligase complex which mediates the ubiquitination and

subsequent proteasomal degradation of target proteins.,pathway:Protein modification; protein ubiquitination.,similarity:Contains 1 BACK (BTB/Kelch associated) domain.,similarity:Contains 1 BTB (POZ) domain.,similarity:Contains 6 Kelch repeats.,subunit:Interacts with cul3.,function:Probable substrate-specific adapter of an E3 ubiquitin-protein ligase complex which mediates the ubiquitination and subsequent proteasomal degradation of target proteins.,pathway:Protein modification; protein ubiquitination.,similarity:Contains 1 BACK (BTB/Kelch associated) domain.,similarity:Contains 1 BTB (POZ) domain.,similarity:Contains 6 Kelch repeats.,subunit:Interacts with cul3.,

Research Area

Image Data



Immunohistochemical analysis of paraffin-embedded human spleen tissue. 1,C16orf44 Rabbit Polyclonal Antibody was diluted at 1:200 (4° overnight) . 2, Sodium citrate pH 6.0 was used for antigen retrieval (>98°C,20min) . 3,Secondary antibody was diluted at 1:200.