
Product Name: C/EBP ϵ Rabbit Polyclonal Antibody**Catalog #: APRab07709**

For research use only.

Summary

Description	Rabbit polyclonal Antibody
Host	Rabbit
Application	WB,IHC,ICC/IF,ELISA
Reactivity	Human,Rat,Mouse
Conjugation	Unconjugated
Modification	Unmodified
Isotype	IgG
Clonality	Polyclonal
Form	Liquid
Concentration	1mg/ml
Storage	Aliquot and store at -20°C (valid for 12 months). Avoid freeze/thaw cycles.
Shipping	Ice bags
Buffer	Liquid in PBS containing 50% glycerol, 0.5% protective protein and 0.02% New type preservative N.
Purification	Affinity purification

Application

Dilution Ratio	WB 1:500-1:2000,IHC 1:100-1:300,ICC/IF 1:200-1:1000,ELISA 1:5000-1:10000
Molecular Weight	34kDa

Antigen Information

Gene Name	CEBPE
Alternative Names	CEBPE; CCAAT/enhancer-binding protein epsilon; C/EBP epsilon
Gene ID	1053.0
SwissProt ID	Q15744
Immunogen	The antiserum was produced against synthesized peptide derived from human C/EBP-epsilon. AA range:40-89

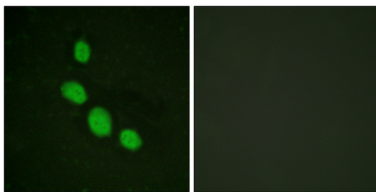
Background

The protein encoded by this gene is a bZIP transcription factor which can bind as a homodimer to certain DNA regulatory

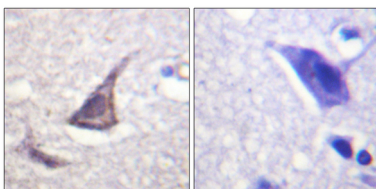
regions. It can also form heterodimers with the related protein CEBP-delta. The encoded protein may be essential for terminal differentiation and functional maturation of committed granulocyte progenitor cells. Mutations in this gene have been associated with Specific Granule Deficiency, a rare congenital disorder. Multiple variants of this gene have been described, but the full-length nature of only one has been determined. [provided by RefSeq, Jul 2008],function:C/EBP are DNA-binding proteins that recognize two different motifs: the CCAAT homology common to many promoters and the enhanced core homology common to many enhancers.,online information:CEBPE mutation db,PTM:Phosphorylated.,similarity:Belongs to the bZIP family. C/EBP subfamily.,similarity:Contains 1 bZIP domain.,subunit:Binds DNA as a dimer and can form stable heterodimers with C/EBP delta.,tissue specificity:Strongest expression occurs in promyelocyte and late-myeloblast-like cell lines.,

Research Area

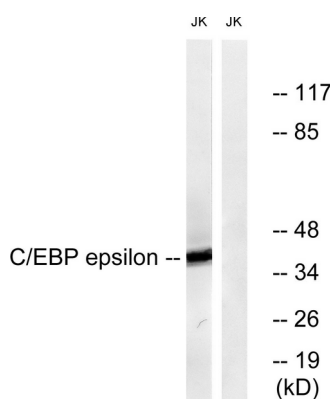
Image Data



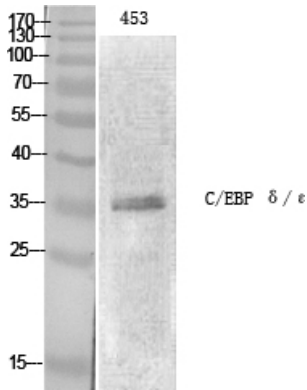
Immunofluorescence analysis of HeLa cells, using C/EBP-epsilon Antibody. The picture on the right is blocked with the synthesized peptide.



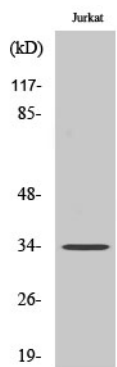
Immunohistochemistry analysis of paraffin-embedded human brain tissue, using C/EBP-epsilon Antibody. The picture on the right is blocked with the synthesized peptide.



Western blot analysis of lysates from JurKat cells, treated with Insulin 0.01U/ml 15', using C/EBP-epsilon Antibody. The lane on the right is blocked with the synthesized peptide.



Western Blot analysis of various cells using C/EBP ϵ Polyclonal Antibody.



Western Blot analysis of Jurkat cells using C/EBP ϵ Polyclonal Antibody.