
Product Name: Bub3 Rabbit Polyclonal Antibody**Catalog #: APRab07695**

For research use only.

Summary

Description	Rabbit polyclonal Antibody
Host	Rabbit
Application	WB,IHC,ICC/IF,ELISA
Reactivity	Human,Mouse,Rat
Conjugation	Unconjugated
Modification	Unmodified
Isotype	IgG
Clonality	Polyclonal
Form	Liquid
Concentration	1mg/ml
Storage	Aliquot and store at -20°C (valid for 12 months). Avoid freeze/thaw cycles.
Shipping	Ice bags
Buffer	Liquid in PBS containing 50% glycerol, 0.5% protective protein and 0.02% New type preservative N.
Purification	Affinity purification

Application

Dilution Ratio	WB 1:500-1:2000,IHC 1:100-1:300,ICC/IF 1:200-1:1000,ELISA 1:5000-1:10000
Molecular Weight	40kDa

Antigen Information

Gene Name	BUB3
Alternative Names	BUB3; Mitotic checkpoint protein BUB3
Gene ID	9184.0
SwissProt ID	O43684
Immunogen	The antiserum was produced against synthesized peptide derived from human BUB3. AA range:279-328

Background

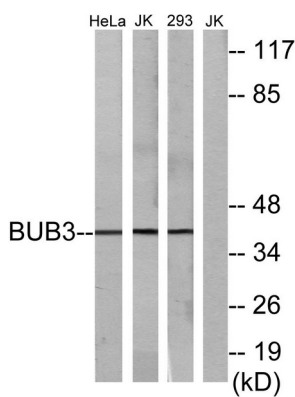
This gene encodes a protein involved in spindle checkpoint function. The encoded protein contains four WD repeat domains

and has sequence similarity with the yeast BUB3 protein. Alternate transcriptional splice variants, encoding different isoforms, have been characterized. [provided by RefSeq, Jul 2008],function:Required for kinetochore localization of BUB1.,similarity:Belongs to the WD repeat BUB3 family.,similarity:Contains 5 WD repeats.,subunit:Interacts with BUB1 and BUBR1.,

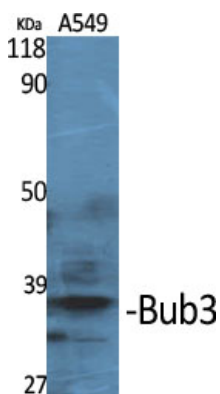
Research Area

Cell_Cycle_G1S;Cell_Cycle_G2M_DNA;

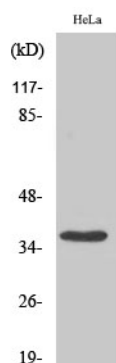
Image Data



Western blot analysis of lysates from HeLa cells, Jurkat cells, and 293 cells, using BUB3 Antibody. The lane on the right is blocked with the synthesized peptide.



Western Blot analysis of various cells using Bub3 Polyclonal Antibody



Western Blot analysis of 293 cells using Bub3 Polyclonal Antibody