

Product Name: BTBD6 Rabbit Polyclonal Antibody**Catalog #: APRab07682**

For research use only.

Summary

Description	Rabbit polyclonal Antibody
Host	Rabbit
Application	WB,IHC,ICC/IF,ELISA
Reactivity	Human,Mouse
Conjugation	Unconjugated
Modification	Unmodified
Isotype	IgG
Clonality	Polyclonal
Form	Liquid
Concentration	1mg/ml
Storage	Aliquot and store at -20°C (valid for 12 months). Avoid freeze/thaw cycles.
Shipping	Ice bags
Buffer	Liquid in PBS containing 50% glycerol, 0.5% protective protein and 0.02% New type preservative N.
Purification	Affinity purification

Application

Dilution Ratio	WB 1:500-1:2000,IHC 1:100-1:300,ICC/IF 1:50-1:200,ELISA 1:5000-1:20000
Molecular Weight	45kDa

Antigen Information

Gene Name	BTBD6
Alternative Names	BTBD6; BDPL; BTB/POZ domain-containing protein 6; Lens BTB domain protein
Gene ID	90135.0
SwissProt ID	Q96KE9
Immunogen	The antiserum was produced against synthesized peptide derived from human BTBD6. AA range:91-140

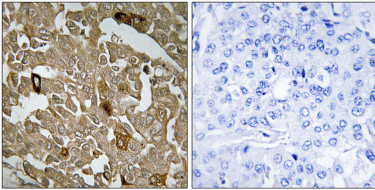
Background

similarity:Contains 1 BTB (POZ) domain.,tissue specificity:Expressed in lens.,similarity:Contains 1 BTB (POZ) domain.,tissue

specificity: Expressed in lens, ,

Research Area

Image Data



Immunohistochemistry analysis of paraffin-embedded human breast carcinoma tissue, using BTBD6 Antibody. The picture on the right is blocked with the synthesized peptide.