

Product Name: BSX Rabbit Polyclonal Antibody**Catalog #: APRab07677**

For research use only.

Summary

Description	Rabbit polyclonal Antibody
Host	Rabbit
Application	WB,ELISA
Reactivity	Human,Mouse,Rat
Conjugation	Unconjugated
Modification	Unmodified
Isotype	IgG
Clonality	Polyclonal
Form	Liquid
Concentration	1mg/ml
Storage	Aliquot and store at -20°C (valid for 12 months). Avoid freeze/thaw cycles.
Shipping	Ice bags
Buffer	Liquid in PBS containing 50% glycerol, 0.5% protective protein and 0.02% New type preservative N.
Purification	Affinity purification

Application

Dilution Ratio	WB 1:500-1:2000,ELISA 1:5000-1:10000
Molecular Weight	26kDa

Antigen Information

Gene Name	BSX
Alternative Names	BSX; BSX1; Brain-specific homeobox protein homolog
Gene ID	390259.0
SwissProt ID	Q3C1V8
Immunogen	Synthesized peptide derived from BSX . at AA range: 150-230

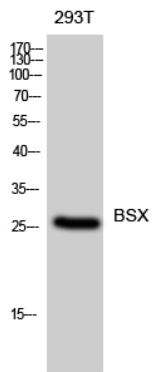
Background

function:DNA binding protein that function as transcriptional activator. Is essential for normal postnatal growth and nursing. Is an essential factor for neuronal neuropeptide Y and agouti-related peptide function and locomotory behavior in the control of

energy balance.,online information:Of fidgets and food -Issue 85 of August 2007,similarity:Belongs to the distal-less homeobox family.,similarity:Contains 1 homeobox DNA-binding domain.,function:DNA binding protein that function as transcriptional activator. Is essential for normal postnatal growth and nursing. Is an essential factor for neuronal neuropeptide Y and agouti-related peptide function and locomotory behavior in the control of energy balance.,online information:Of fidgets and food - Issue 85 of August 2007,similarity:Belongs to the distal-less homeobox family.,similarity:Contains 1 homeobox DNA-binding domain.,

Research Area

Image Data



Western Blot analysis of 293T cells using BSX Polyclonal Antibody diluted at 1: 500